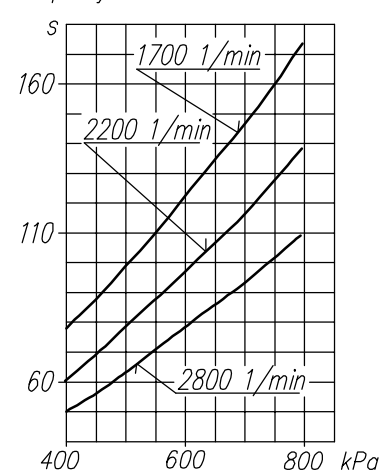
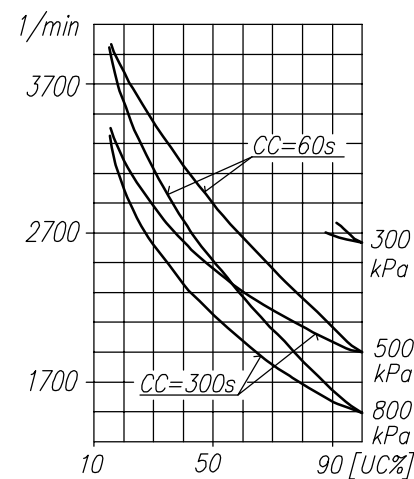


Time to fill a tank of 40dm³ capacity



Max. r.p.m. for continuous duty



TECHNICAL DATA:

- Number of cylinders 1
- Cylinder diameter 60 mm
- Piston stroke 38 mm
- Total piston displacement 107 cm³
- Mass 6.7 kg
- Working pressure 800 kPa
- Max. pressure for short time duty 1000 kPa
- Max. allowable temp. of compressed air +220 °C
- Cooling by inflation of air, with the speed of the stream min. 4m/s
- Lubrication: individual splash lubrication with motor oil poured into the crankcase; oil volume about 140 cm³

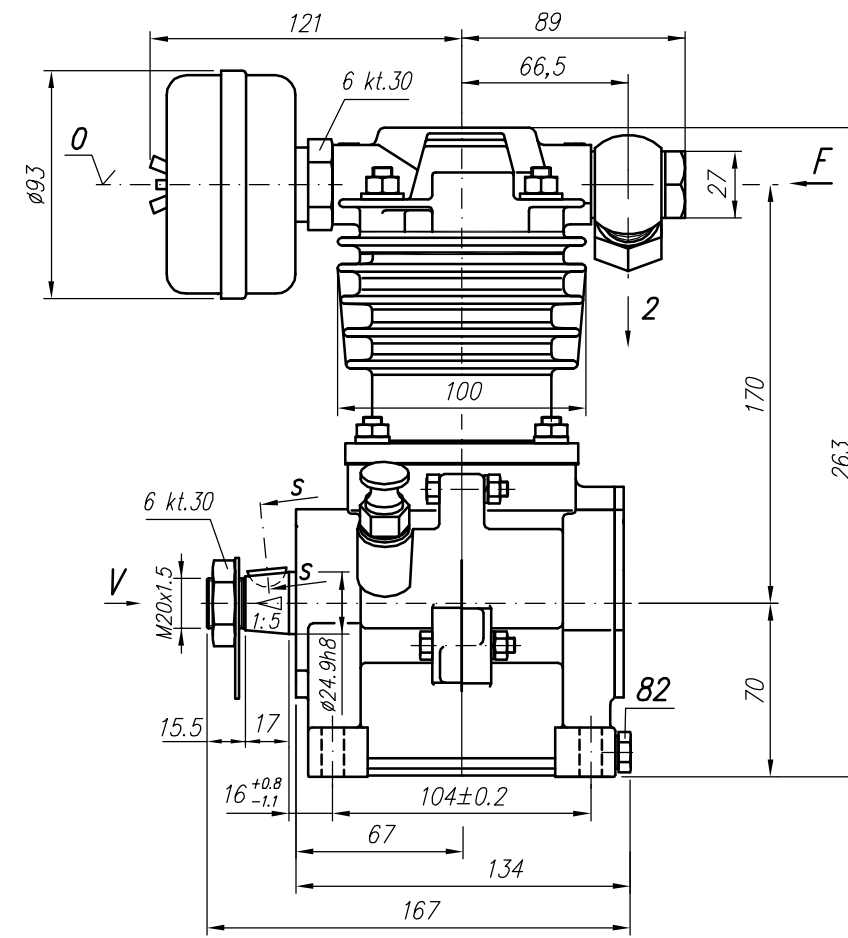
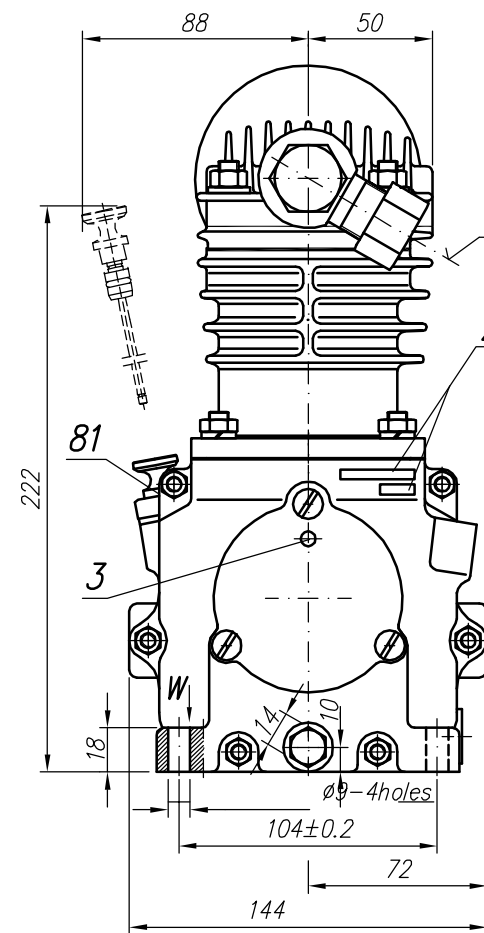
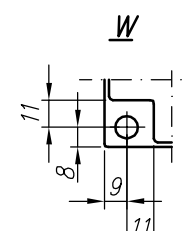
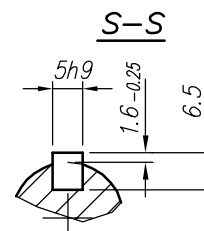
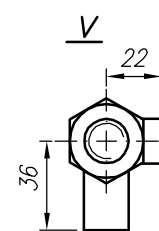
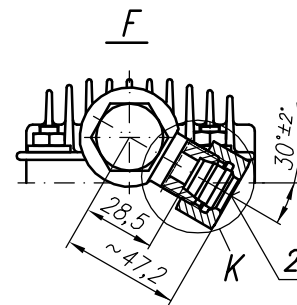
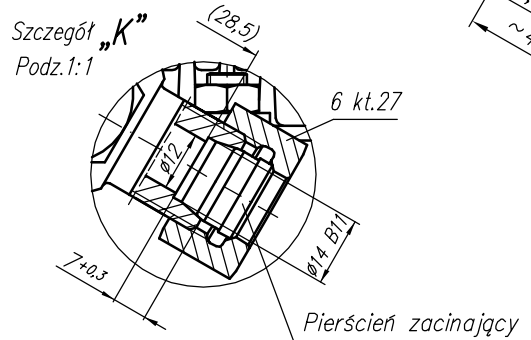
SYMBOLS DESCRIPTION:

- 0 - suction connection
- 2 - discharge connection
- 3 - breather
- 81 - oil inlet
- 82 - oil outlet
- Numeral signs according to International Standard ISO-6786
- Z - compressor symbol and production date

NOTE! The above characteristics are for open-inlet-valve control system at minimum cooling requirements and at ambient temperature +20°C

DEFINITIONS: CC=CT+CL - period of average operating cycle

- $UC = \frac{CT}{CC} \times 100\%$ - percent ratio of compressor full load operating time in average operating cycle (also called percent duty cycle)
- CL - compressor no-load operating time (exhaust to the atmosphere)
- CT - compressor full load operating time



OFFER DRAWING			
Konstr.	B. Włodarczyk	14.09.99 r.	FABRYKA OSPRZĘTU SAMOCHODOWEGO
Normaliz.	L. Baryna		POLMO-Łódź S.A. Dział Konstrukcji
Sprawdził	W. Lesiak		
Zatwierdził	B. Kleśa		
Podziałka	Nazwa		
1:2		Compressor 601.23.939	