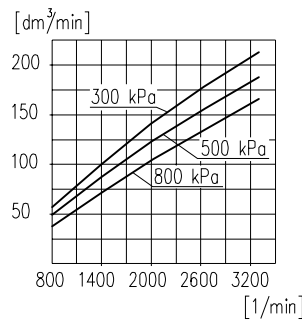
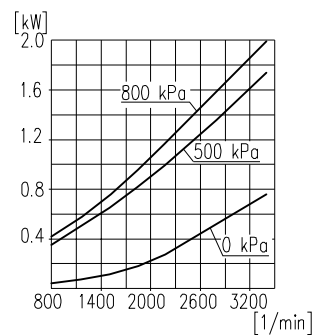


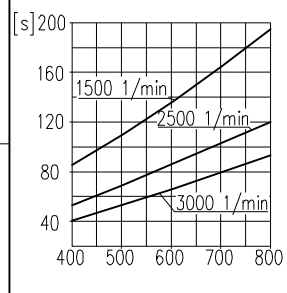
Suction capacity



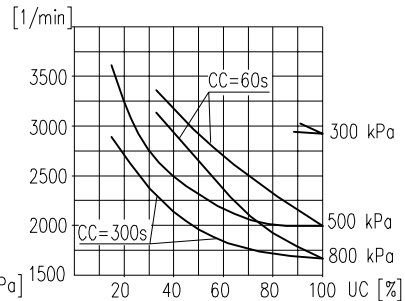
Power consumption



Time to fill a tank of 40dm³ capacity



Max. r.p.m. for continuous duty



TECHNICAL DATA:

Number of cylinders	1
Cylinder diameter	60 mm
Piston stroke	36 mm
Total piston displacement	100 cm³
Mass	8,4 kg
Working pressure	800 kPa
Max. pressure for short time duty	1000 kPa
Max. allowable temp. of compressed air	+220 °C
Cooling by inflation of, air with the speed of the stream min.	4 m/s
Lubrication forced circulation, splash lubrication	
min. pressure of oil	300±200 kPa
(The pressure drop down is allowed to min. during the idle running of the heated up engine)	60 kPa
Normal speed	max. 3000 1/min
Max. speed, temporary	3300 1/min

SYMBOLS DESCRIPTION:

- 0-suction connection
- 2-discharge connection
- 81-lubricating oil inlet
- 82-lubricating oil outlet and crankcase breathing

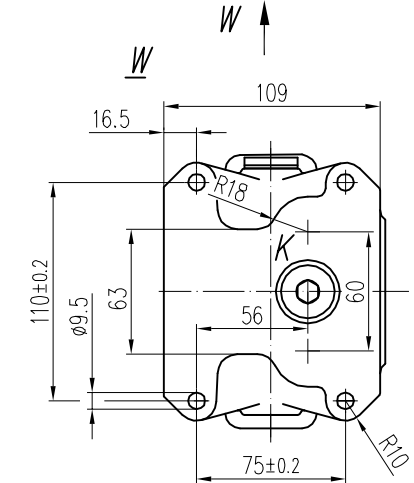
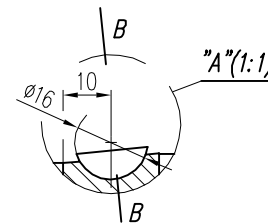
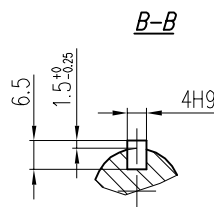
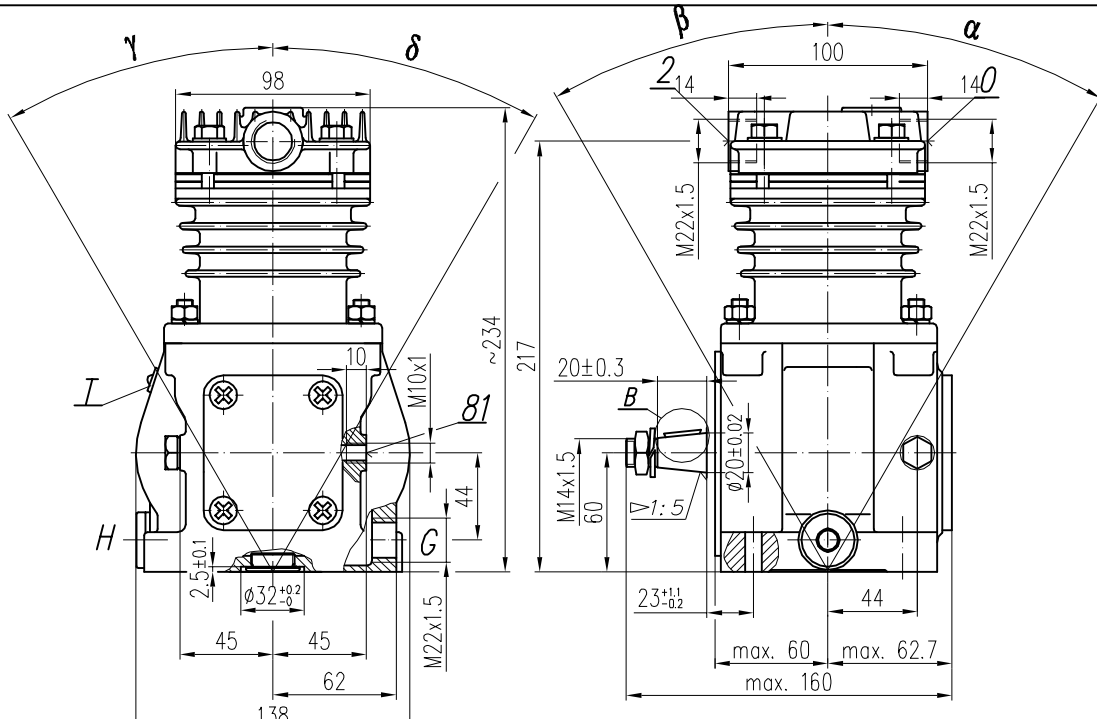
Digital marking according to International Standard ISO-6786

*-max. angular tilt of the compressor

T-Datum plate

** - Stopped by plug

$\alpha, \beta, \delta, \gamma$ - max. angular deflection of the compressor



Compressor variants	
Scheme	Variant number
	601.35.931 601.35.941* 601.35.951**
	601.35.932 601.35.942* 601.35.952**
	601.35.933 601.35.943* 601.35.953**
	601.35.934 601.35.944* 601.35.954**

Variant nr without * - 82 at the bottom, 81 position X
 Variant nr with * - 82 and 81 position X
 Variant nr with ** - 82 and 81 position Y

	Description
	Discharge port
	Suction port

NOTE! The above characteristics are for open-inlet-valve control system at minimum cooling requirements and at ambient temperature +20°C

DEFINITIONS: CC=CT+CL - period of average operating cycle

$UC = \frac{CT}{CC} \times 100\%$ - percent ratio of compressor full load operating time in average operating cycle (also called percent duty cycle)

CL - compressor no-load operating time (exhaust to the atmosphere)

CT - compressor full load operating time

Port 82 position	α	β	γ	δ
G	20°	20°	15°	45°
H	20°	20°	45°	15°
K	20°	20°	30°	30°

GENERAL TOLERANCES				
CLASS	RANGE OF NOMINAL DIMENSIONS (±)MM			
	≤50	>50 ≤180	>180 ≤400	>400
II	1.0	2.0	3.0	4.0

FORCE, POWER PRESSURE ETC.	
±3°	±10 %

OFFER DRAWING			
Konstr.	K.Malinowski	25.02.2010	FABRYKA OSPRZĘTU SAMOCHODOWEGO
Normaliz.	A.Walnicki		POLMO-KÓDZ S.A. FOS Stuzba Rozwoju
Sprawdzit	A.Walnicki		
Zatwierdzit	A.Walnicki		
Podziatka	Nazwa	1:2.5 Compressor 601.35.941	