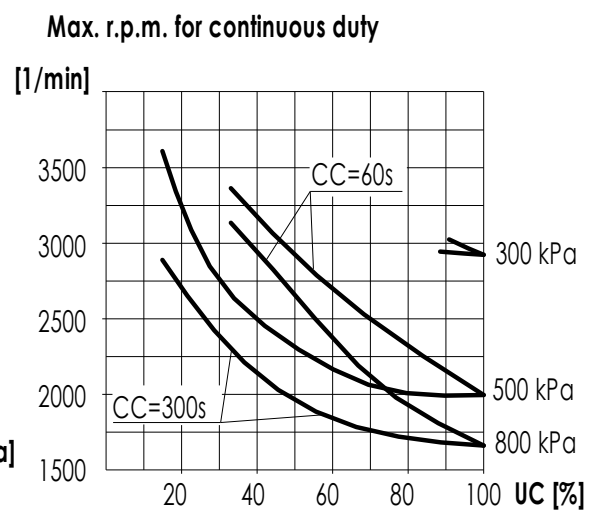
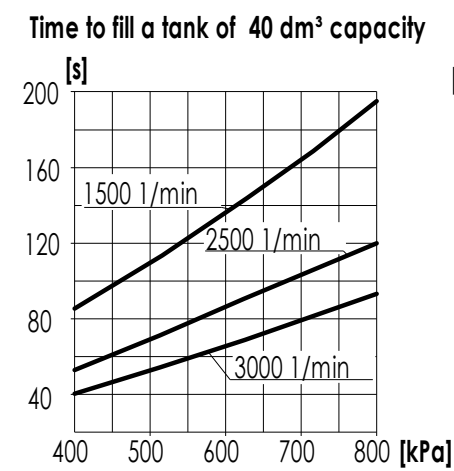
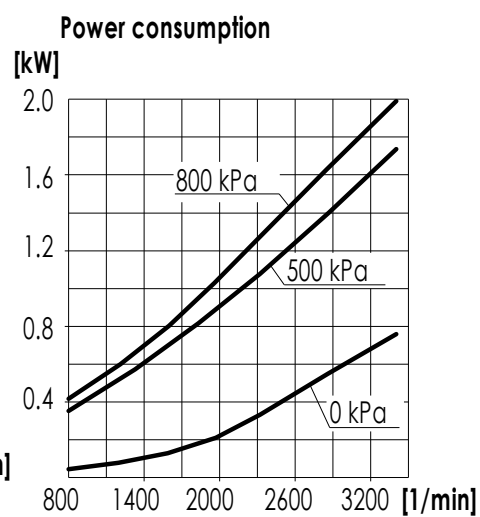
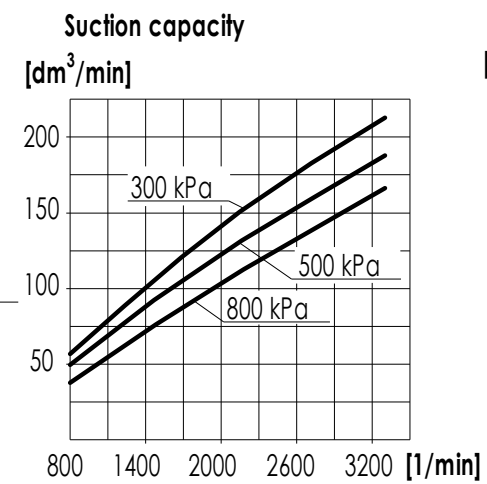


TECHNICAL DATA:

Number of cylinders	1
Cylinder diameter	60 mm
Piston stroke	36 mm
Total piston displacement	100 cm ³
Working pressure	800 kPa
Max. pressure for short time duty	1000 kPa
Max. allowable temp. of compressed air	220°C
Cooling by inflation of, air with the speed	4 m/s
min. pressure of oil	300±200 kPa
Lubrication forced circulation, splash	300±200 kPa
lubrication min. pressure of oil	60 kPa
(The pressure drop down is allowed to min. during the idle running of the heated up engine)	60 kPa
Normal speed	3000 obr/min
Max. speed, temporary	3300 obr/min

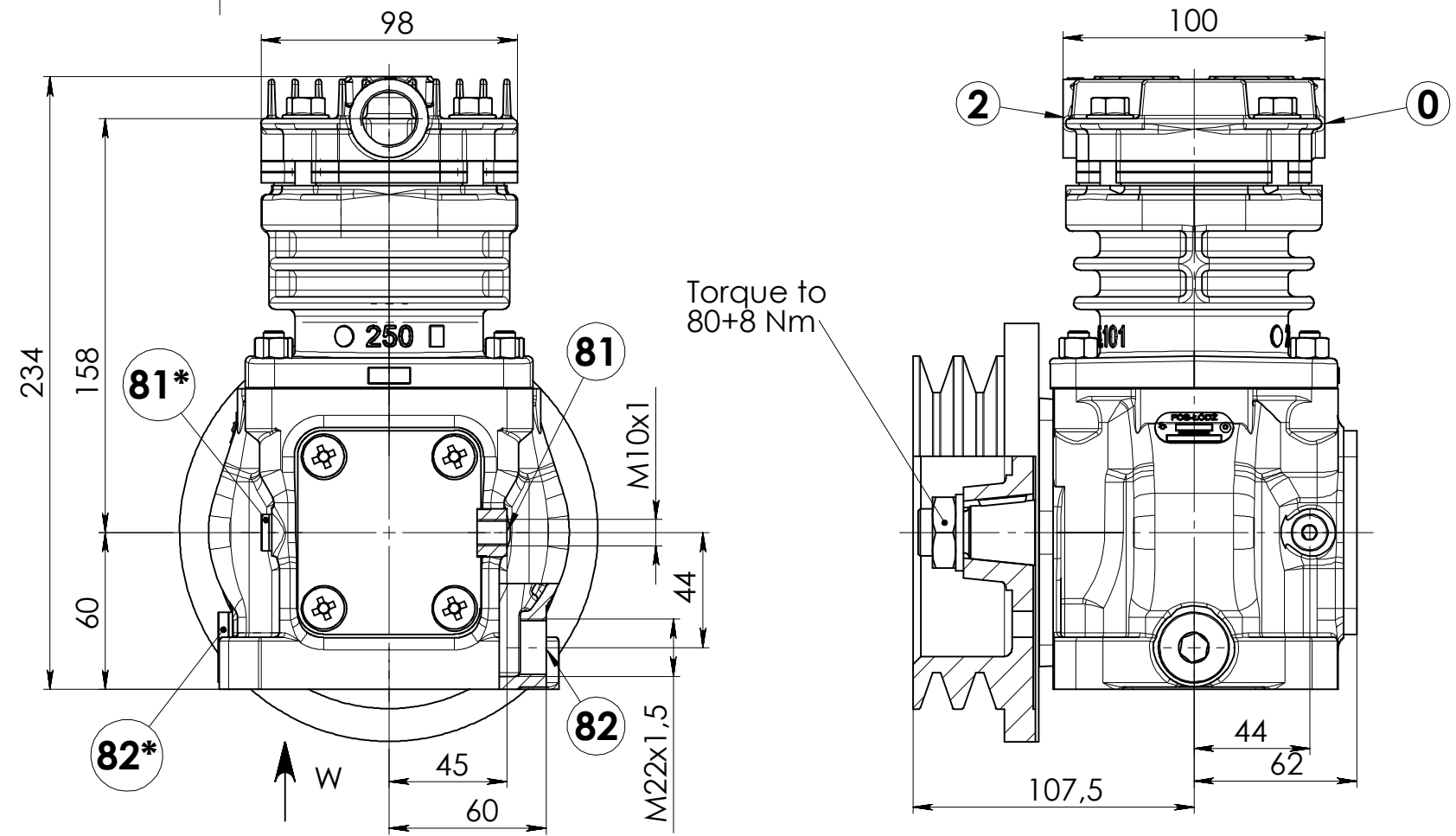


DEFINITIONS:

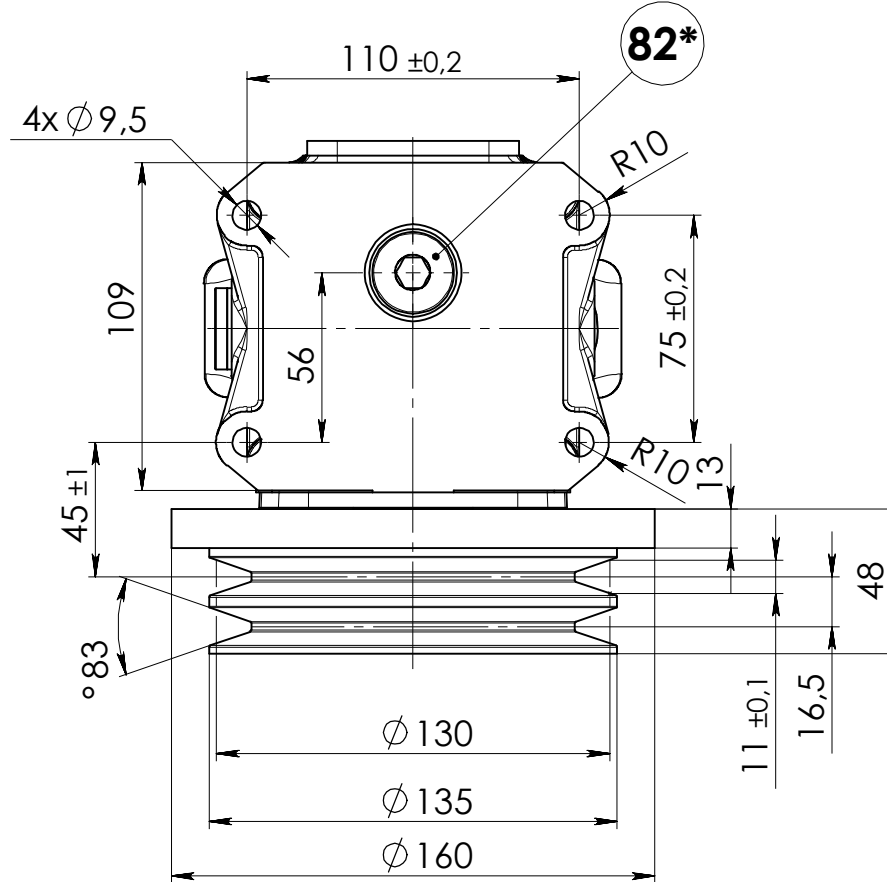
CC=CT+CL- period of average operating cycle
 UC= $\frac{CT}{CC} \times 100\%$ - percent ratio of compressor full load
 operating time in average operating cycle
 CL - compressor no-load operating time
 CT - compressor full load operating time

NOTE:

The above characteristics are for open-inlet-valve control system at minimum cooling requirements and at ambient temperature +20°C

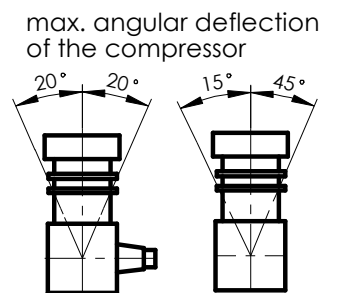


WIDOK W



PORTS:

- 0 - M22x1,5 głąb. 14
- 2 - M22x1,5 głąb. 14
- 81,81* - M10x1 głąb. 10
- 82,82* - M22x1,5 głąb. 14



SYMBOLS DESCRIPTION:

- 0 - suction connection
- 2 - discharge connection
- 81-lubricating oil inlet
- 82-lubricating oil outlet and crankcase breathing
- * - Stopped by plug

CLASS	GENERAL TOLERANCES				FORCE, POWER PRESURRE ETC.	First Angle Projection
	RANGE OF NOMINAL DIMENSIONS (±)MM					
II	≤50	>50 ≤180	>180 ≤400	≥400	±3°	±10%
Format	Rysunek ofertowy / Offer Drawing				FABRYKA OSPRZETU SAMOCHODOWEGO	
A3	Konstr.	K. Malinowski	29-08-2014		POLMO-Łódź S.A.	
Masa kg	Sprawdził	A. Wolnicki	Data		DZIAŁ KONSTRUKCJI	
Podziałka	Nazwa		Compressor 601.35.920			
1:2.5						