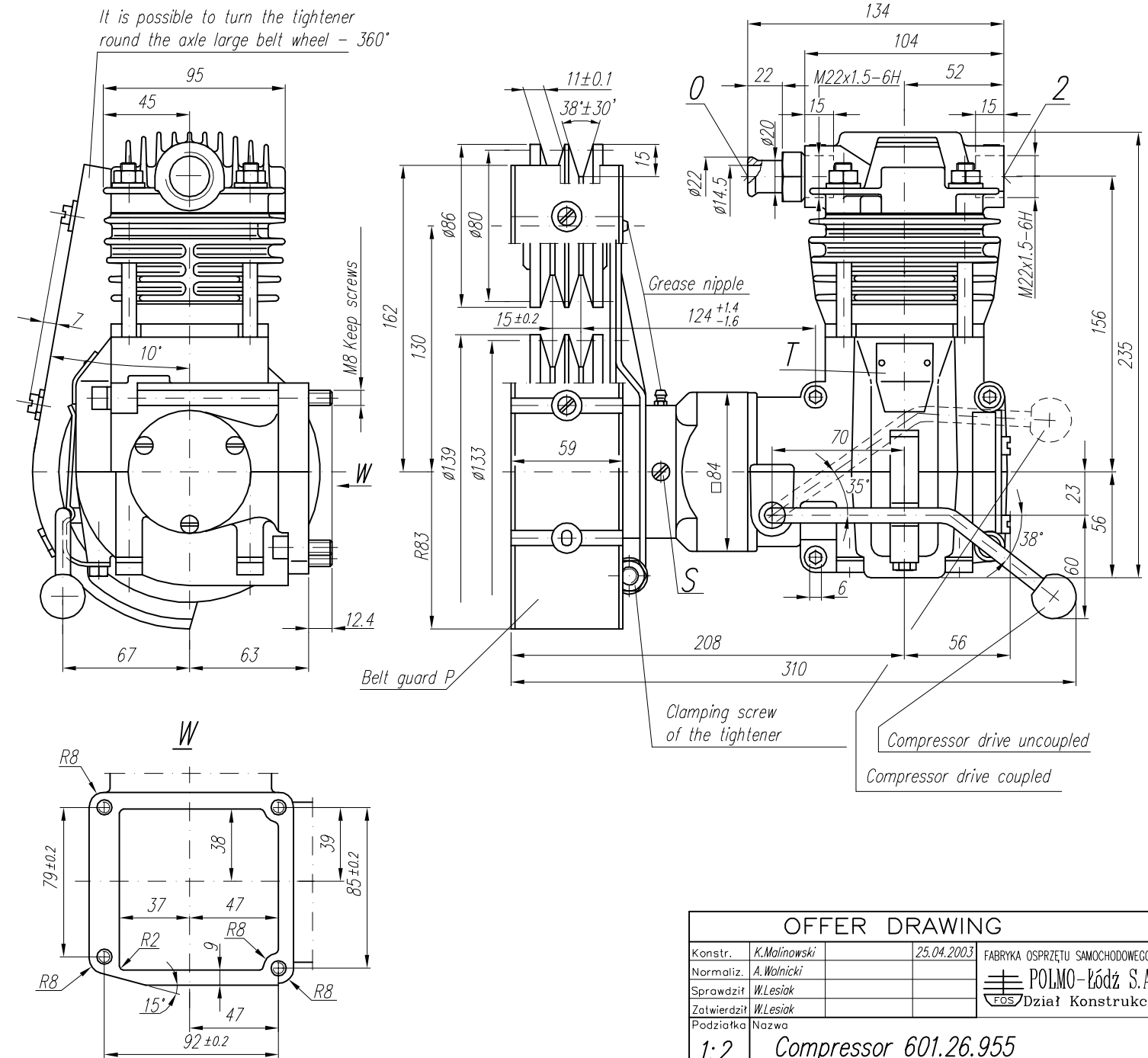


TECHNICAL DATA:

- Number of cylinders 1
 - Cylinder diameter 60 mm
 - Piston stroke 40 mm
 - Total piston displacement 11.3 cm³
 - Mass 11.2 kg
 - Working pressure 800 kPa
 - Max. pressure for short time duty 1000 kPa
 - Max. allowable temp. of compressed air +220 °C
 - Cooling by inflation of air, with the speed of the stream min. 4m/s
- Lubrication fog of the oil from engine

SYMBOLS DESCRIPTION:

- 0 - suction connection
- 2 - discharge connection
- Numeral signs according to International Standard ISO-6786
- T - rating plate
- S - The checking hole of lubrication blind with screw M6



NOTE! The above characteristics are for open-inlet-valve control system at minimum cooling requirements and at ambient temperature of +20°C

DEFINITIONS: CC=CT+CL - period of average operating cycle

$UC = \frac{CT}{CC} \times 100\%$ - percent ratio of compressor full load operating time in average operating cycle (also called percent duty cycle)

CL - compressor no-load operating time (exhaust to the atmosphere)

CT - compressor full load operating time

Variants of compressor	
601.26.955	acc. drawing
601.26.956	without belt guard P

OFFER DRAWING				
Konstr.	K.Malinowski	25.04.2003	FABRYKA OSPRZĘTU SAMOCHODOWEGO	
Normaliz.	A.Walnicki			
Sprawdził	W.Lesiak			
Zatwierdził	W.Lesiak			
Podziałka	Nazwa			
1:2	Compressor 601.26.955			