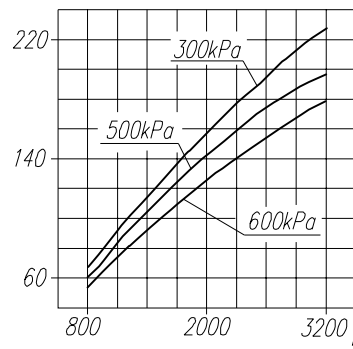
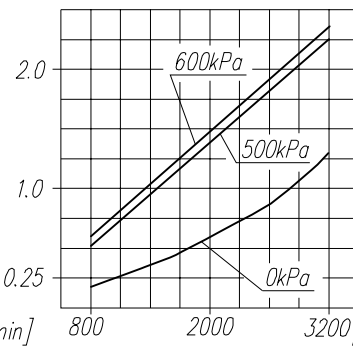


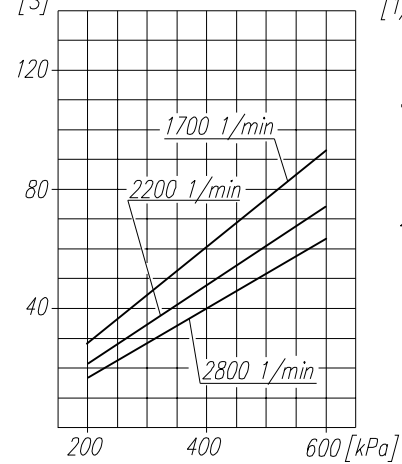
Suction capacity  
[dm<sup>3</sup>/min]



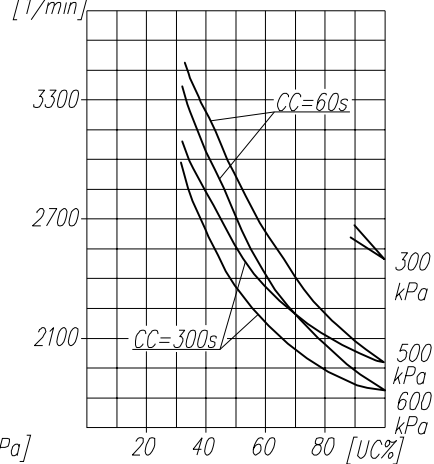
Power consumption  
[kW]



Time to fill a tank of 40dm<sup>3</sup>  
capacity  
[S]



Max. r.p.m. for continuous duty  
[1/min]



**TECHNICAL DATA:**

- Number of cylinders 1
- Cylinder diameter 60 mm
- Piston stroke 40 mm
- Total piston displacement 11.3 cm<sup>3</sup>
- Mass 11.2 kg
- Working pressure 800 kPa
- Max. pressure for short time duty 1000 kPa
- Max. allowable temp. of compressed air +220 °C
- Cooling by inflation of air, with the speed of the stream min. 4m/s

Lubrication fog of the oil from engine

**SYMBOLS DESCRIPTION:**

- 0 - suction connection
  - 2 - discharge connection
- Numeral signs according to International Standard ISO-6786
- T - rating plate
  - S - The checking hole of lubrication blind with screw M6

**NOTE!** The above characteristics are for open-inlet-valve control system at minimum cooling requirements and at ambient temperature of +20°C

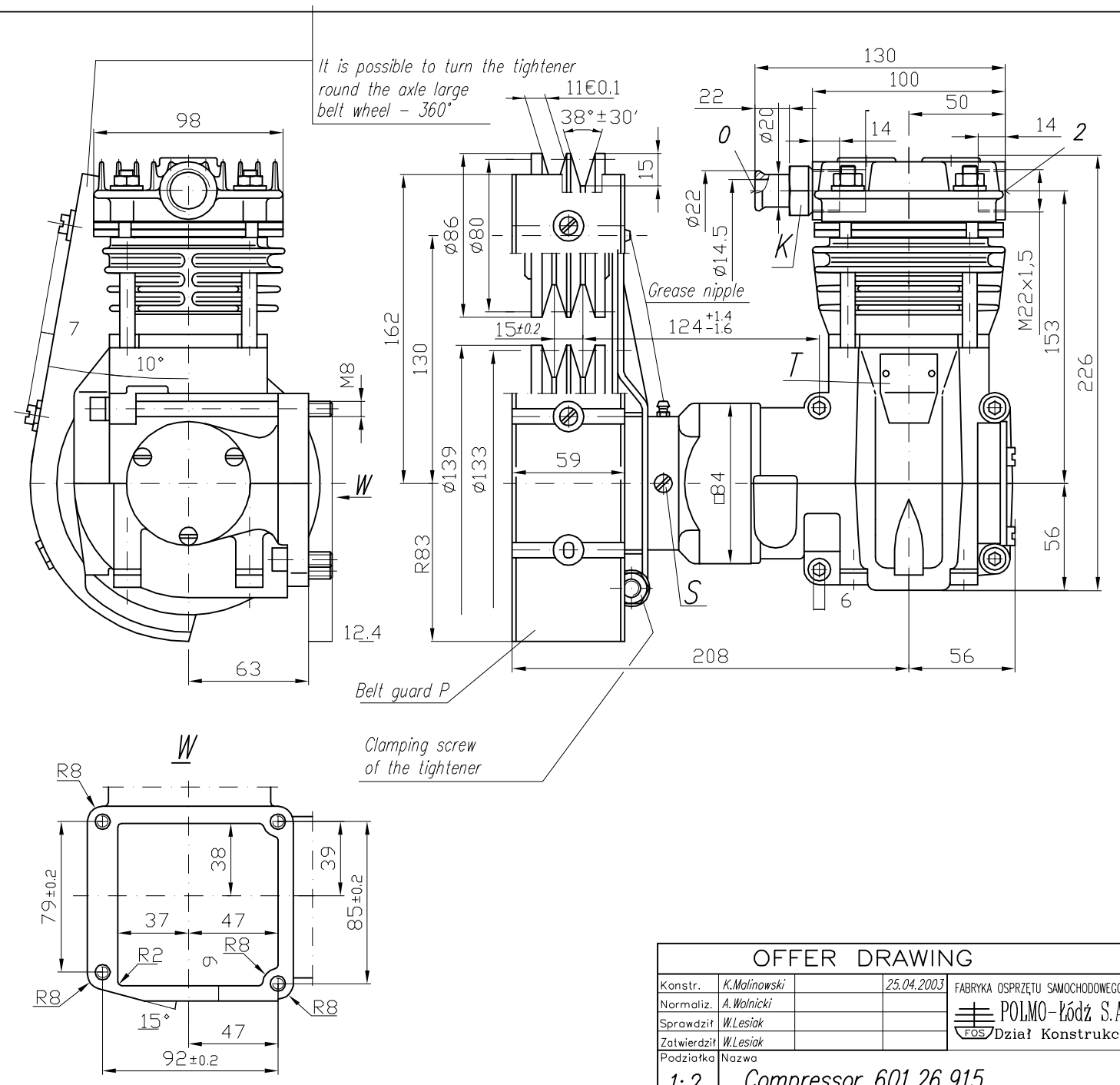
**DEFINITIONS:** CC=CT+CL - period of average operating cycle

$UC = \frac{CT}{CC} \times 100\%$  - percent ratio of compressor full load operating time in average operating cycle (also called percent duty cycle)

CL - compressor no-load operating time (exhaust to the atmosphere)

CT - compressor full load operating time

Variants of compressor	
601.26.915	acc. drawing
601.26.916	without belt guard P
601.26.917	without of the terminal K



OFFER DRAWING			
Konstr.	K.Malinowski	25.04.2003	FABRYKA OSPRZĘTU SAMOCHODOWEGO
Normaliz.	A.Walnicki		POLMO-KÓDZ S.A. FOS/Dział Konstrukcji
Sprawdził	W.Lesiak		
Zatwierdził	W.Lesiak		
Podziałka	Nazwa		
1:2		Compressor 601.26.915	