

DEFINITIONS:

CC=CT+CL - period of average operating cycle

$UC = \frac{CT}{CC} \times 100\%$ - percent ratio of compressor full load operating time in average operating cycle (also called percent duty cycle)

CL - compressor no-load operating time (exhaust to the atmosphere)

CT - compressor full load operating time

TECHNICAL DATA:

Number of cylinders 1
Cylinder diameter 60 mm
Piston stroke 40 mm
Total piston displacement 113 cm³
Mass 11,2 kg
Working pressure 800 kPa
Max. allowable temp. of compressed air +220 °C
Cooling by air flow with minimal speed 4 m/s
Lubrication oil fog from engine

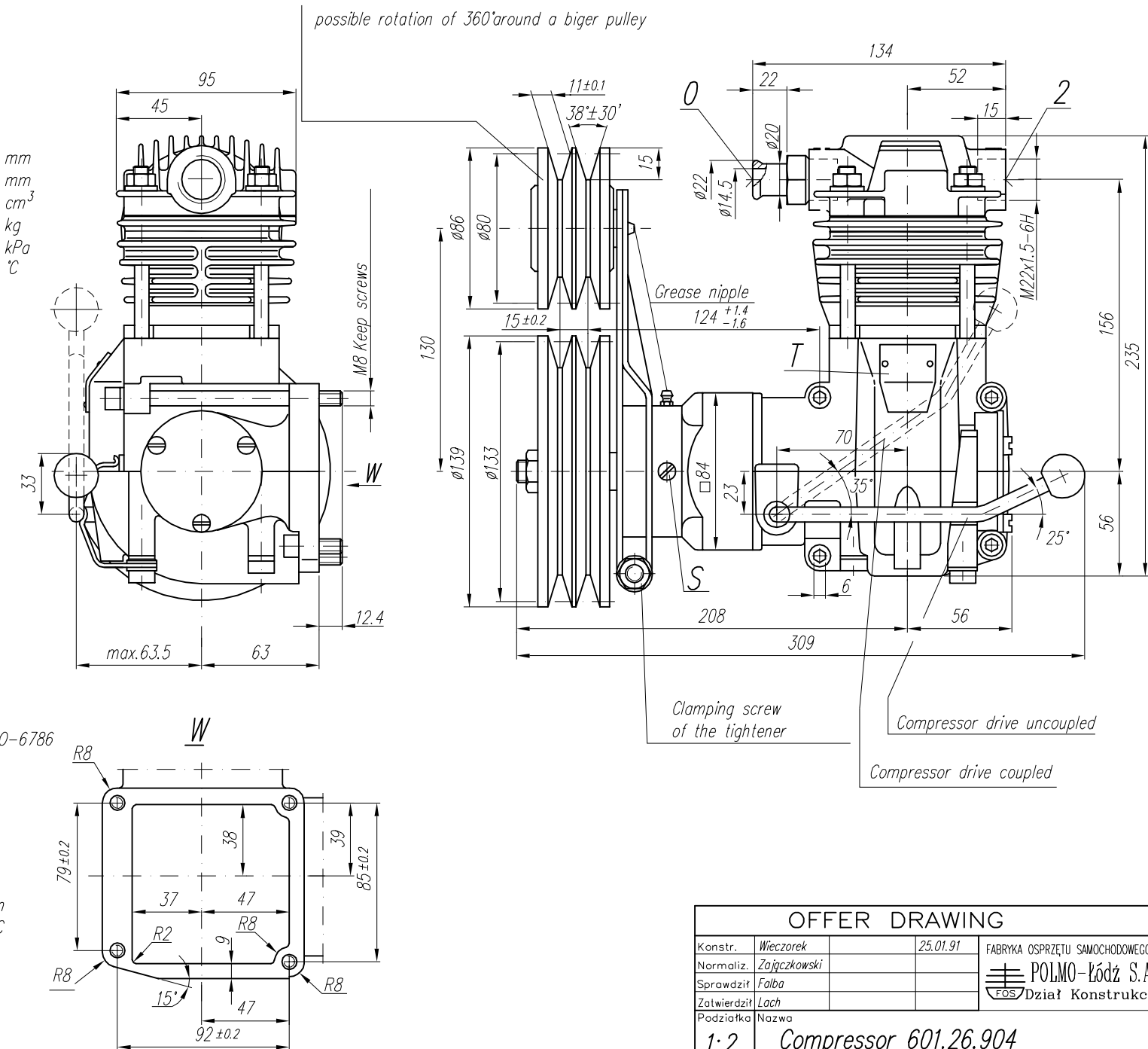
SYMBOLS DESCRIPTION:

0 - suction connection
2 - discharge connection

Numeral signs according to International Standard ISO-6786
T - rating plate

S - The checking hole of lubrication blind with screw M6

NOTE! The above characteristics are for open-inlet-valve control system at minimum cooling requirements and at ambient temperature +20°C



OFFER DRAWING			
Konstr.	Wieczorek	25.01.91	FABRYKA OSPRZĘTU SAMOCHODOWEGO
Normaliz.	Zajęczkowski		POLMO-Łódź S.A. FOS Dział Konstrukcji
Sprawdził	Falba		
Zatwierdził	Lach		
Podziałka	Nazwa	1:2 Compressor 601.26.904	