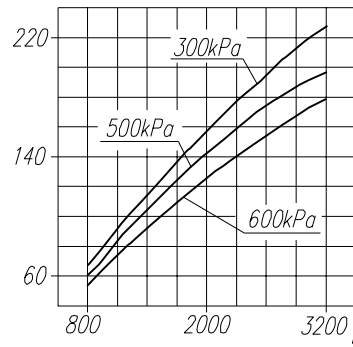
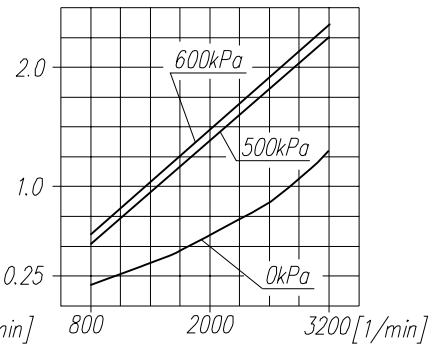


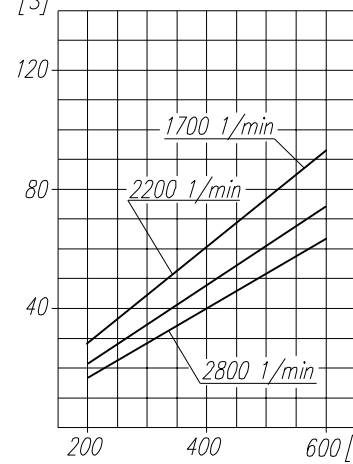
Suction capacity
[dm³/min]



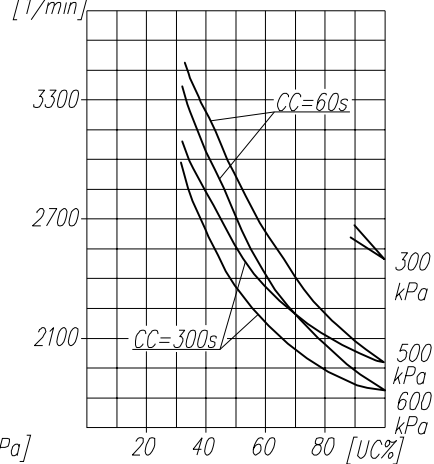
Power consumption
[kW]



Time to fill a tank of 40dm³
capacity
[S]



Max. r.p.m. for continuous duty
[1/min]



TECHNICAL DATA:

- Number of cylinders 1
- Cylinder diameter 60 mm
- Piston stroke 40 mm
- Total piston displacement 11.3 cm³
- Mass 11.2 kg
- Working pressure 800 kPa
- Max. pressure for short time duty 1000 kPa
- Max. allowable temp. of compressed air +220 °C
- Cooling by inflation of air, with the speed of the stream min. 4m/s

Lubrication fog of the oil from engine

SYMBOLS DESCRIPTION:

- 0 - suction connection
- 2 - discharge connection
- Numeral signs according to International Standard ISO-6786
- T - rating plate
- S - The checking hole of lubrication blind with screw M6

Variants of compressor	
601.26.901	acc. drawing
601.26.902	without belt guard P
601.26.903	without of the terminal K

NOTE! The above characteristics are for open-inlet-valve control system at minimum cooling requirements and at ambient temperature of +20°C

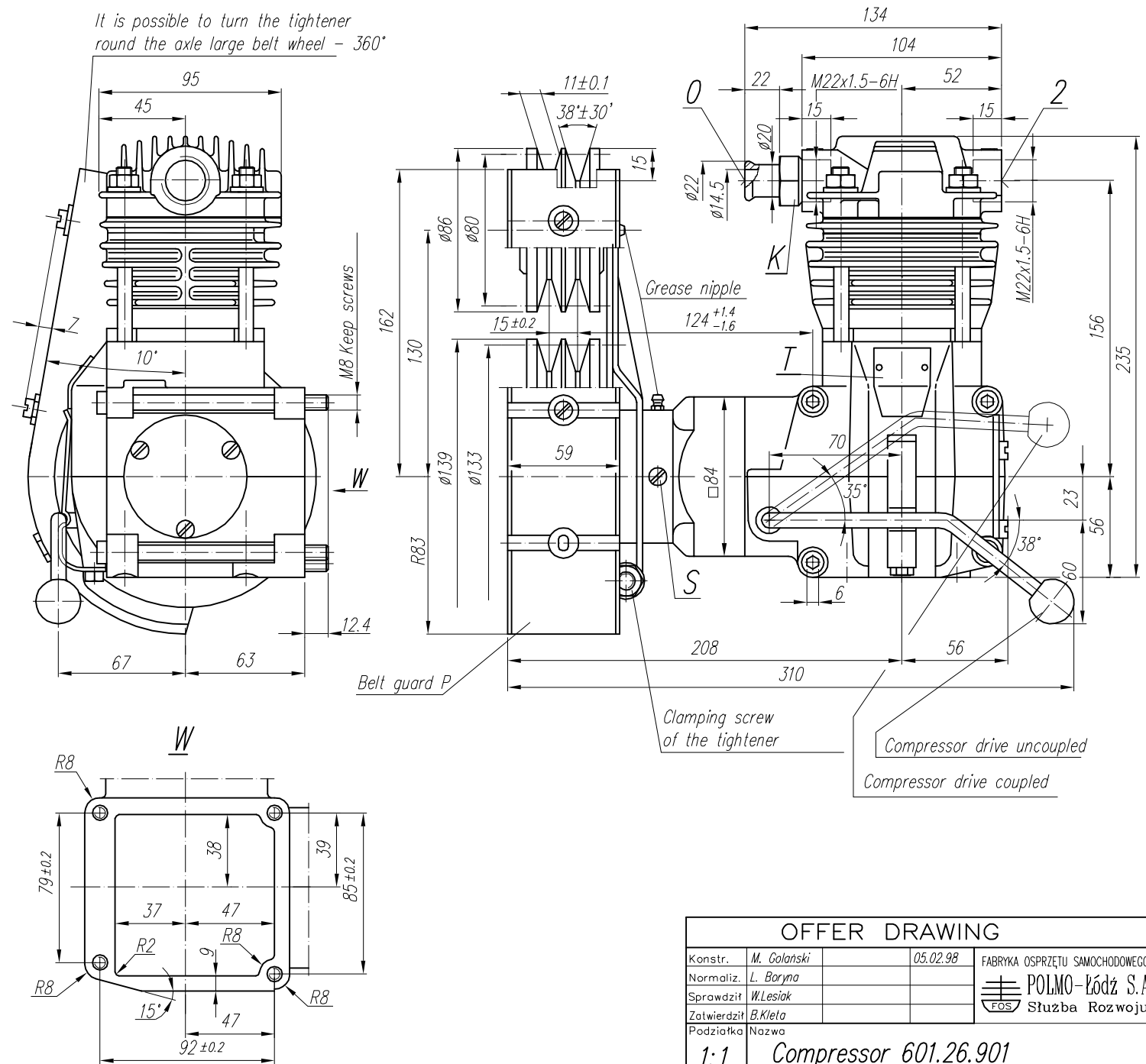
DEFINITIONS: CC=CT+CL - period of average operating cycle

$UC = \frac{CT}{CC} \times 100\%$ - percent ratio of compressor full load operating time in average operating cycle (also called percent duty cycle)

CL - compressor no-load operating time (exhaust to the atmosphere)

CT - compressor full load operating time

It is possible to turn the tightener round the axle large belt wheel - 360°



OFFER DRAWING			
Konstr.	M. Golański	05.02.98	FABRYKA OSPRZĘTU SAMOCHODOWEGO
Normaliz.	L. Baryna		POLMO-KÓDZ S.A.
Sprawdził	W. Lesiak		
Zatwierdził	B. Kiełto		
Podziałka	Nazwa		
1:1	Compressor 601.26.901		