

**NOTE!** The above characteristics are for open-inlet-valve control system at minimum cooling requirements and at ambient temperature +20°C

**DEFINITIONS:** CC=CT+CL - period of average operating cycle

$UC = \frac{CT}{CC} \times 100\%$  - percent ratio of compressor full load operating time in average operating cycle (also called percent duty cycle)  
 CL - compressor no-load operating time (exhaust to the atmosphere)  
 CT - compressor full load operating time

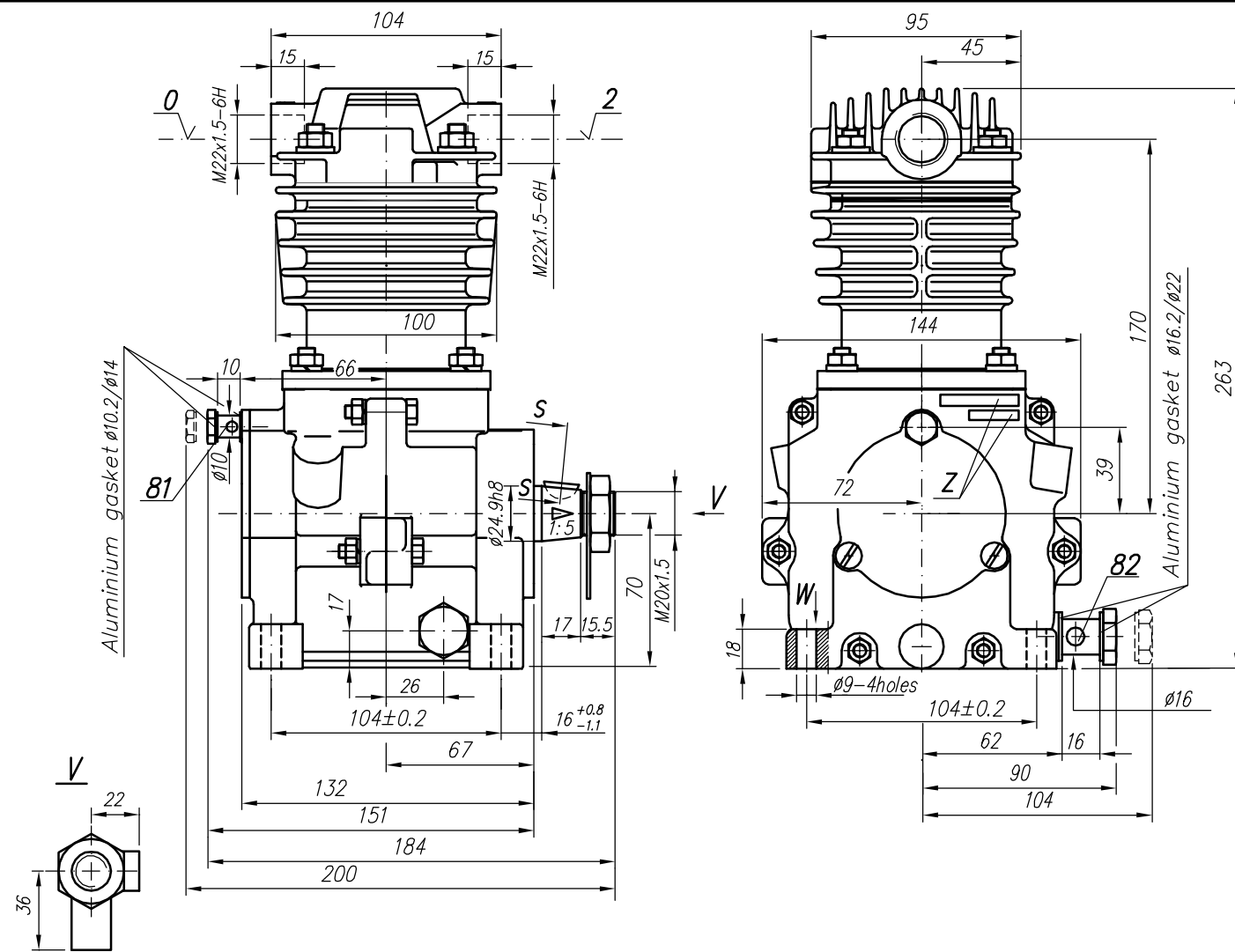
**TECHNICAL DATA:**

Number of cylinders 1  
 Cylinder diameter 60 mm  
 Piston stroke 38 mm  
 Total piston displacement 107 cm<sup>3</sup>  
 Mass 6.2 kg  
 Working pressure 800 kPa  
 Max. pressure for short time duty 1000 kPa  
 Max. allowable temp. of compressed air +220 °C  
 Cooling by inflation of air, with the speed of the stream min. 4m/s  
 Lubrication: forced circulation, splash lubrication  
 min. pressure of oil 60kPa

**SYMBOLS DESCRIPTION:**

0 - suction connection  
 2 - discharge connection  
 81 - lubricating oil inlet  
 82 - lubricating oil outlet and crankcase breathing  
 Numerical signs according to International Standard ISO-6786  
 Z - compressor symbol and production date

ASSEMBLING VARIANTS	SKETCH
601.22.931	
601.22.932	



Zmiana x ilość	data	ax	bx	cx	Fabryka Osprzętu Samochodowego POLMO-Łódź SA DZIAŁ ROZWOJU
nr. wprowadz. zmiany					
zm. wprowadził					Materiał
Konstr. Włodarczyk	Mat. akcept.	Masa	-	kg	
Kreślił Włodarczyk	Normaliz. Boryna	Format	3xA4		
Sprawdz. Lesiak	Zatw. Antkowiak	dn. 12.02.97			wg normy -
Podziałka 1:2	Nazwa	Compressor			Nr rys. 601.22.931