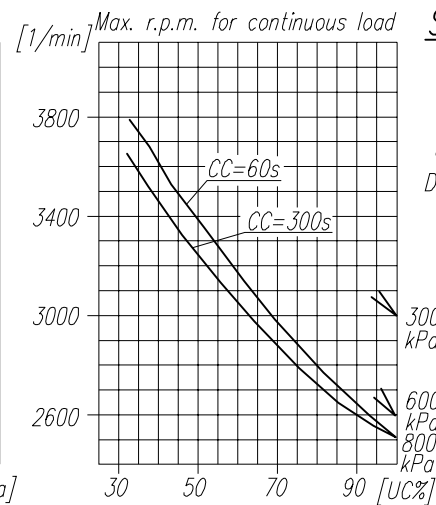
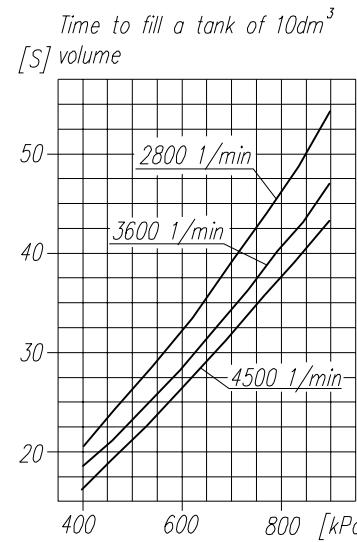


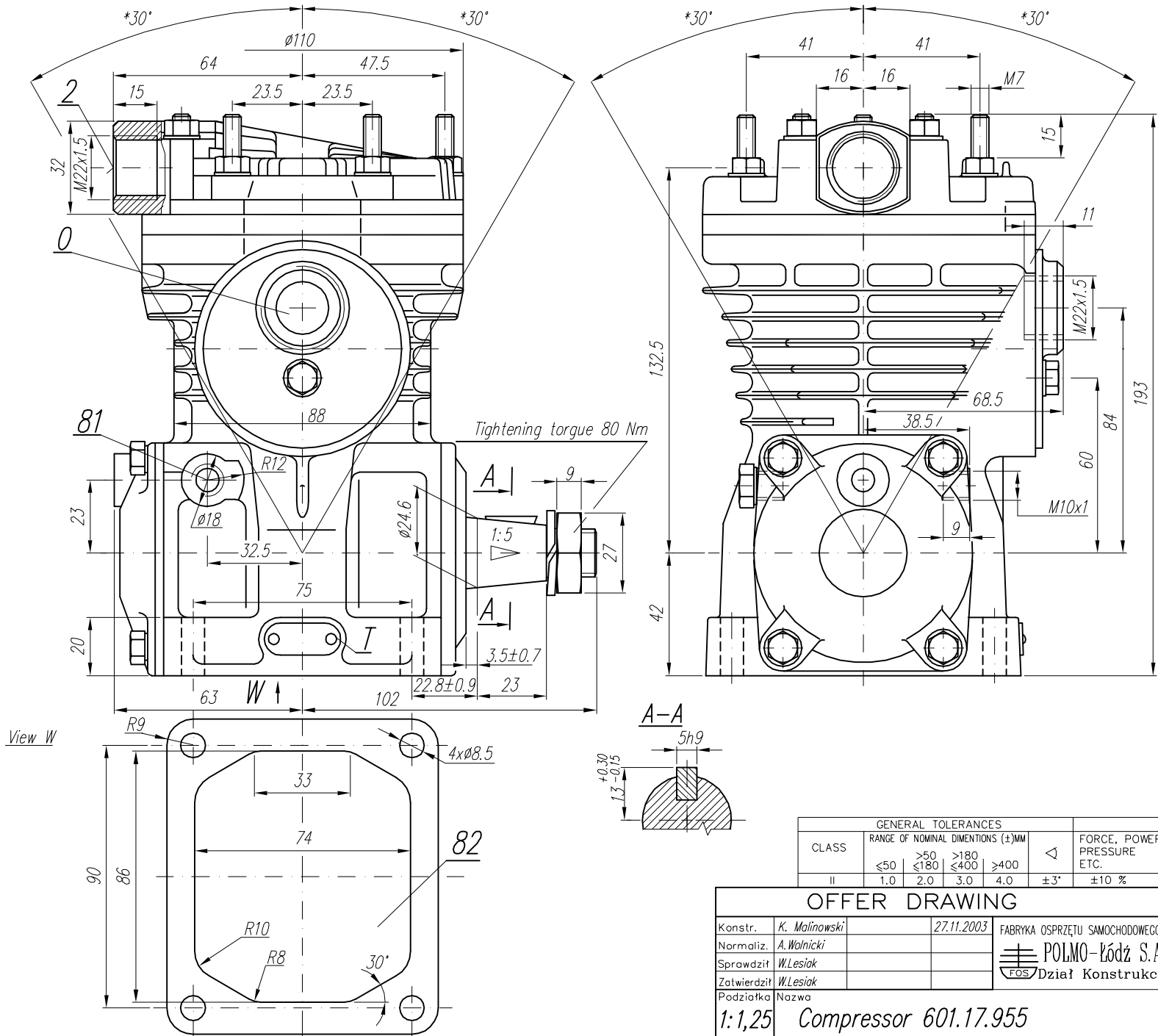
**TECHNICAL DATA:**

Number of cylinders 1  
 Cylinder diameter 65 mm  
 Piston stroke 23 mm  
 Total piston displacement 76 cm<sup>3</sup>  
 Mass 6.5 kg  
 Working pressure to 1600 kPa  
 Max. pressure for short time load 1800 kPa  
 Max. allowable temp. of compressed air +220 °C  
 Cooling by blow of air, with the speed of the flow min. 6 m/s



**SYMBOL DESCRIPTION:**

0 - suction end  
 2 - discharge end  
 81 - lubricating oil inlet  
 82 - lubricating oil outlet and crankcase breathing  
 Digital marking according to International Standard ISO-6786  
 T - rating plate  
 \* - max. angular tilt of the compressor



**NOTE!** The above characteristics are for open air suction system at ambient temperature +20°C and for cooling with fan

**DEFINITIONS:** CC=CT+CL - period of compressor average operating cycle  
 $UC = \frac{CT}{CC} \times 100\%$  - percentage fraction of loaded compressor operating time in average operating cycle  
 CL - compressor no-load operating time (free blow-out to atmosphere)  
 CT - loaded compressor operating time

CLASS	GENERAL TOLERANCES				FORCE, POWER PRESSURE ETC.
	RANGE OF NOMINAL DIMENSIONS (±)MM				
II	≤50	>50 ≤180	>180 ≤400	>400	±3'
	1.0	2.0	3.0	4.0	±10 %

OFFER DRAWING					
Konstr.	K. Malinowski	27.11.2003	FABRYKA OSPRZĘTU SAMOCHODOWEGO		
Normaliz.	A. Walnicki		POLMO-KÓDZ S.A.		
Sprawdzit	W. Lesiak		FOS Dział Konstrukcji		
Zatwierdził	W. Lesiak				
Podziałka	Nazwa	1:1,25 Compressor 601.17.955			