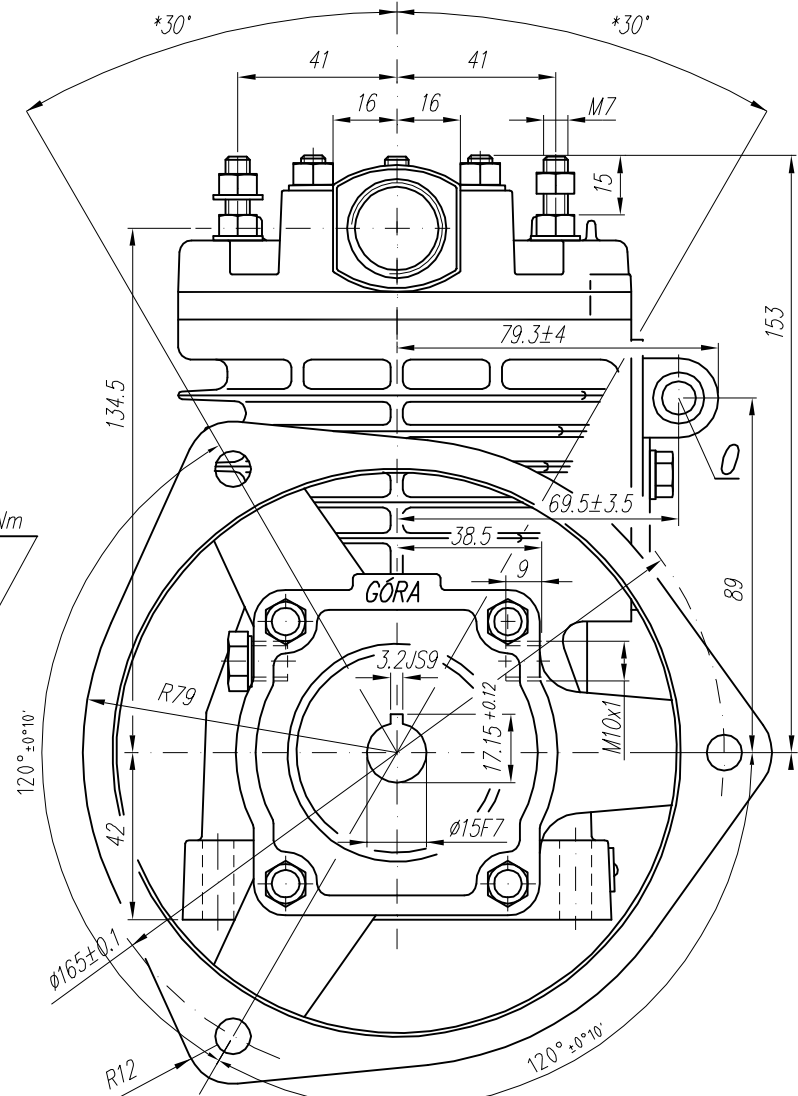
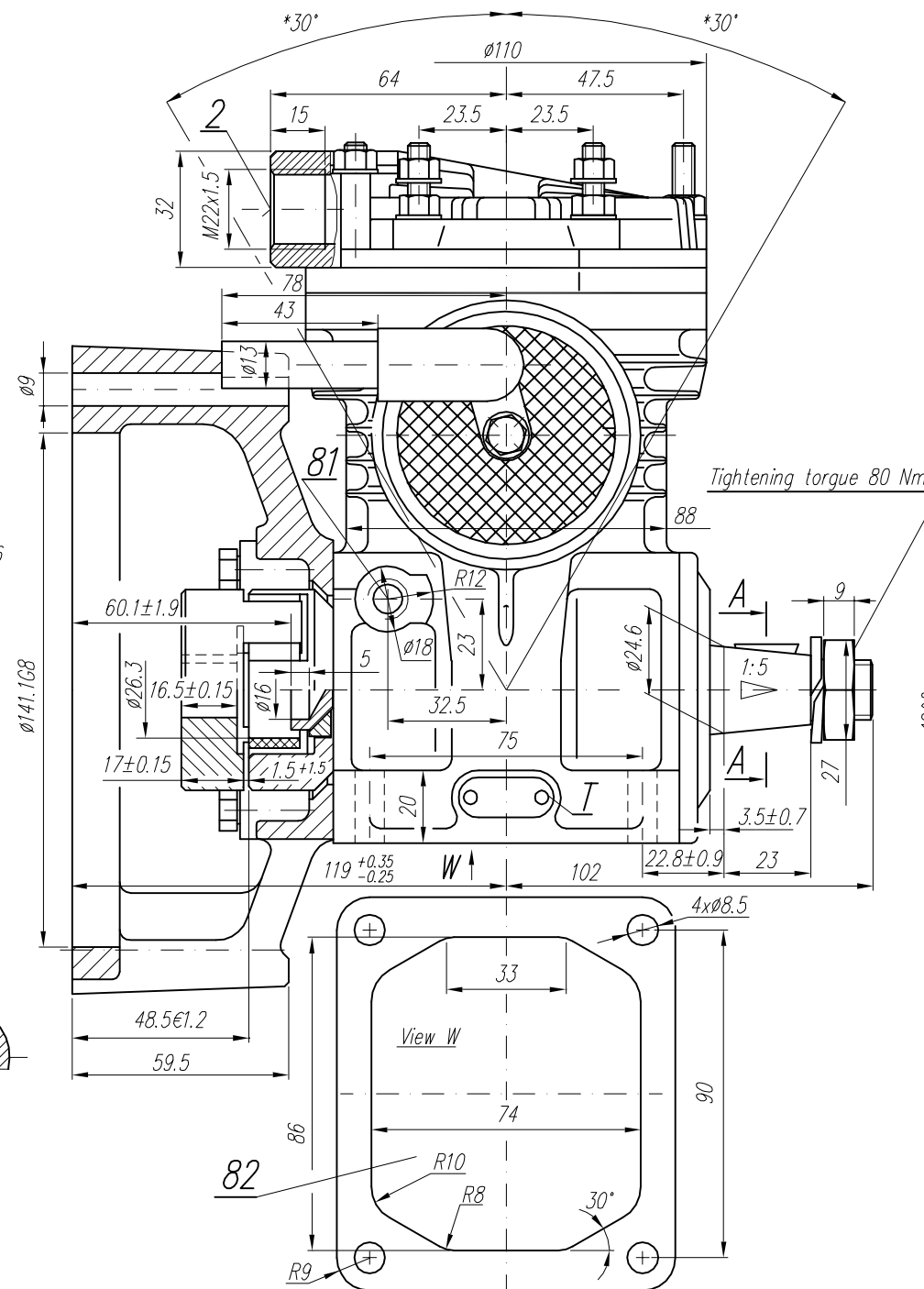
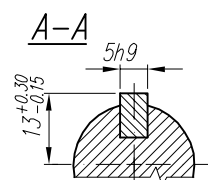
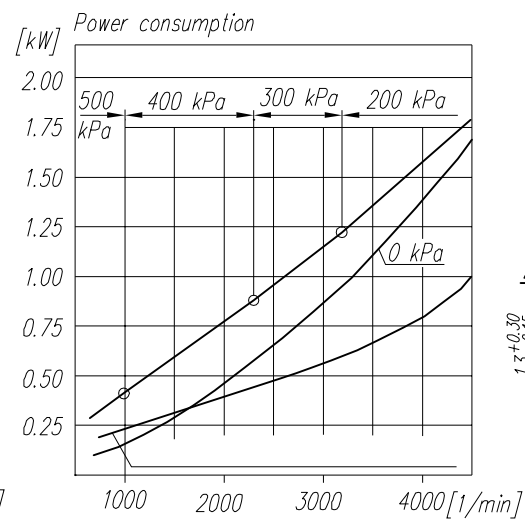
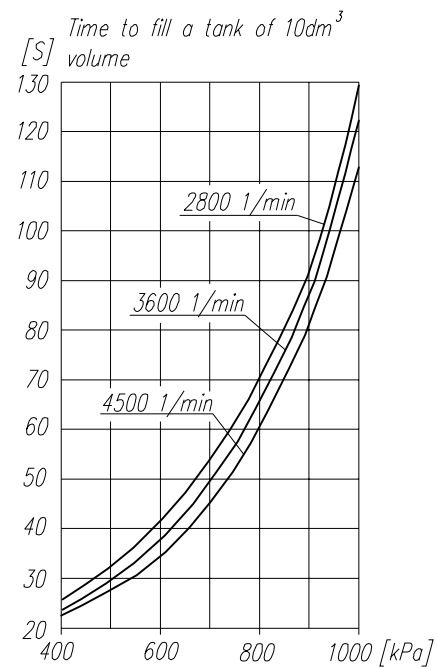


TECHNICAL DATA:

Number of cylinders 1
 Cylinder diameter 65 mm
 Piston stroke 23 mm
 Total piston displacement 76 cm^3
 Mass 6.5 kg
 Self-stabilizing pressure 1200^{+200}_{-100} kPa
 Max. allowable temp. of compressed air $+220$ °C
 Cooling by blow of air, with the speed of the flow min. 6 m/s
 Lubrication forced circulation, splash lubrication
 min. pressure of oil 200 kPa

SYMBOL DESCRIPTION:

0 - suction end
 2 - discharge end
 81 - lubricating oil inlet (thread M10x1 length 9 mm)
 82 - lubricating oil outlet and crankcase breathing
 T - rating plate
 * - max. angular tilt of the compressor



CLASS	GENERAL TOLERANCES				FORCE, POWER PRESSURE ETC.
	RANGE OF NOMINAL DIMENSIONS (\pm)MM				
	≤ 50	>50 ≤ 180	>180 ≤ 400	>400	
II	1.0	2.0	3.0	4.0	$\pm 3'$ $\pm 10 \%$

OFFER DRAWING

Konstr.	K.Malinowski	22.04.2003	FABRYKA OSPRZĘTU SAMOCHODOWEGO
Normaliz.	A.Walnicki		POLMO-KÓDZ S.A.
Sprawdził	W.Lesiak		FOS Dział Konstrukcji
Zatwierdził	W.Lesiak		
Podziałka	Nazwa		
1.1,25	Compressor 601.17.950		

NOTE! The above characteristics are for open air suction system at ambient temperature $+20^\circ\text{C}$ and for cooling with fan