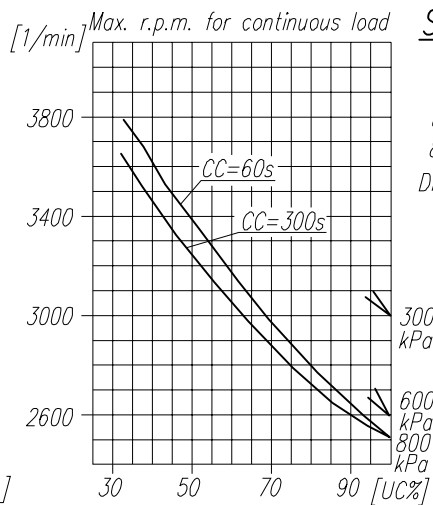
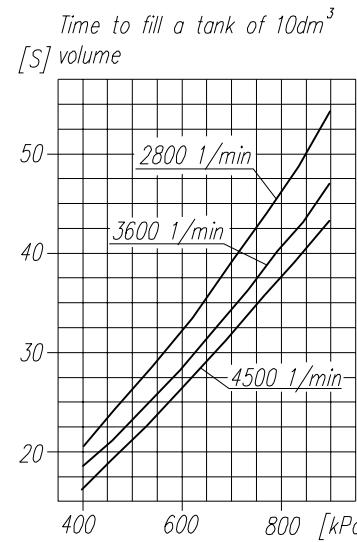


TECHNICAL DATA:

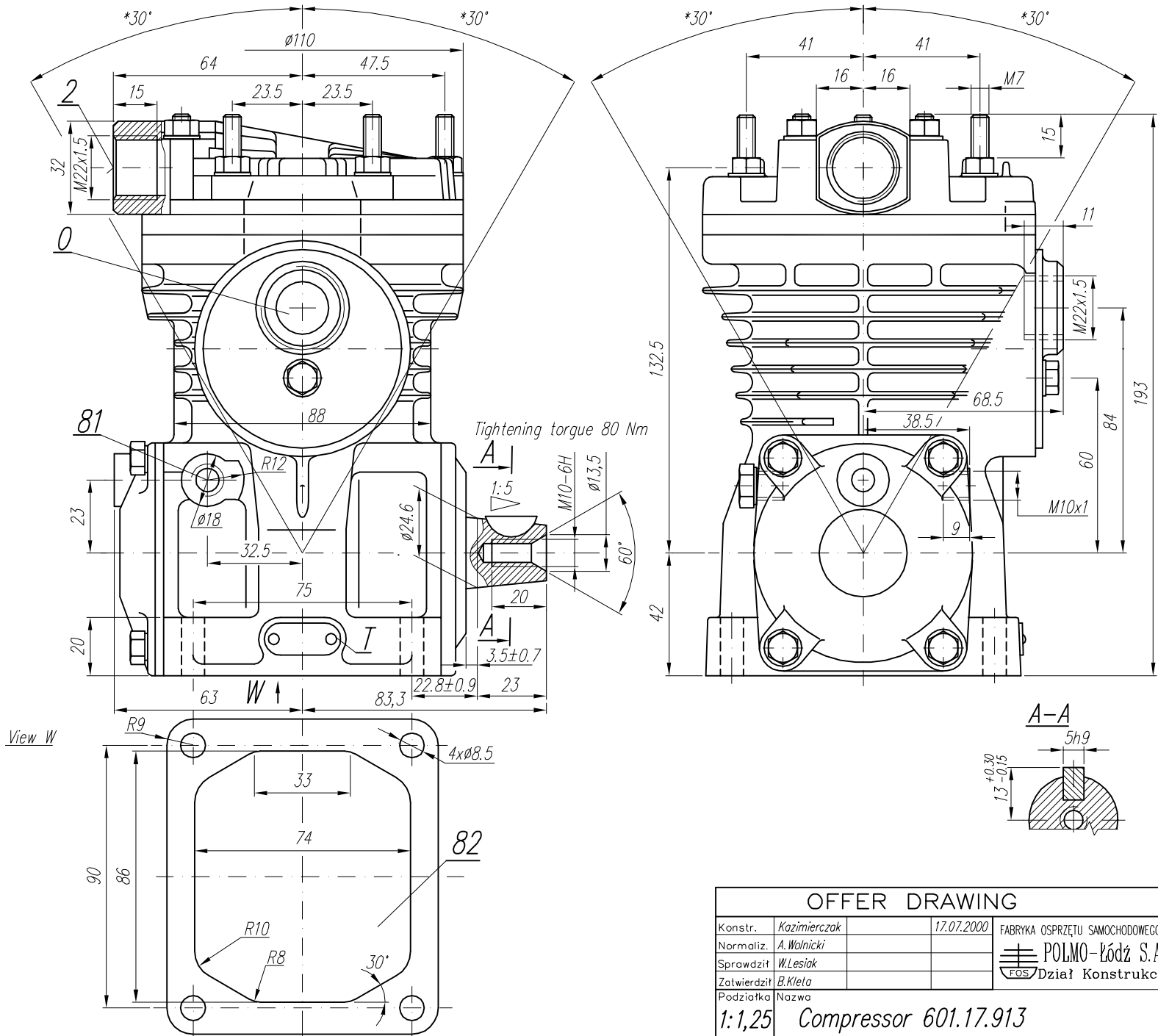
Number of cylinders 1
 Cylinder diameter 65 mm
 Piston stroke 23 mm
 Total piston displacement 76 cm³
 Mass 6.5 kg
 Working pressure to 1600 kPa
 Max. pressure for short time load 1800 kPa
 Max. allowable temp. of compressed air +220 °C
 Cooling by blow of air, with the speed of the flow min. 6 m/s



Lubrication forced circulation, splash lubrication
 min. pressure of oil 200 kPa

SYMBOL DESCRIPTION:

0 - suction end
 2 - discharge end
 81 - lubricating oil inlet
 82 - lubricating oil outlet and crankcase breathing
 Digital marking according to International Standard ISO-6786
 T - rating plate
 * - max. angular tilt of the compressor



NOTE! The above characteristics are for open air suction system at ambient temperature +20°C and for cooling with fan

DEFINITIONS: CC=CT+CL - period of compressor average operating cycle

$UC = \frac{CT}{CC} \times 100\%$ - percentage fraction of loaded compressor operating time in average operating cycle

CL - compressor no-load operating time (free blow-out to atmosphere)

CT - loaded compressor operating time

Code of compressor	
SAME DEUTZ FAHR	FOS POLMO
0.011.8341.4	601.17.913

OFFER DRAWING

Konstr.	Kazimierzczak	17.07.2000	FABRYKA OSPRZĘTU SAMOCHODOWEGO
Normaliz.	A. Walnicki		POLMO-Łódź S.A.
Sprawdził	W. Lesiak		
Zatwierdził	B. Kleto		FOS Dział Konstrukcji
Podziałka	Nazwa	1:1,25 Compressor 601.17.913	