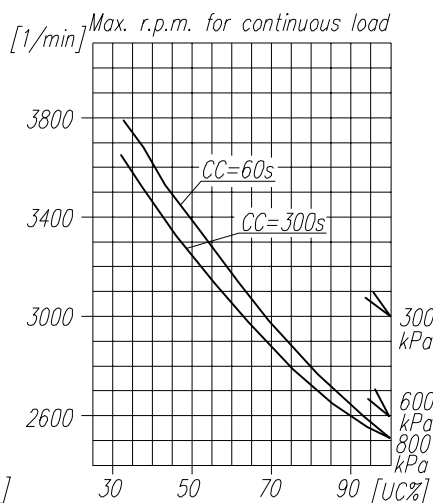
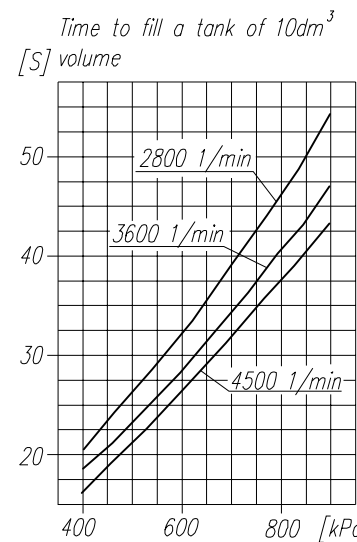
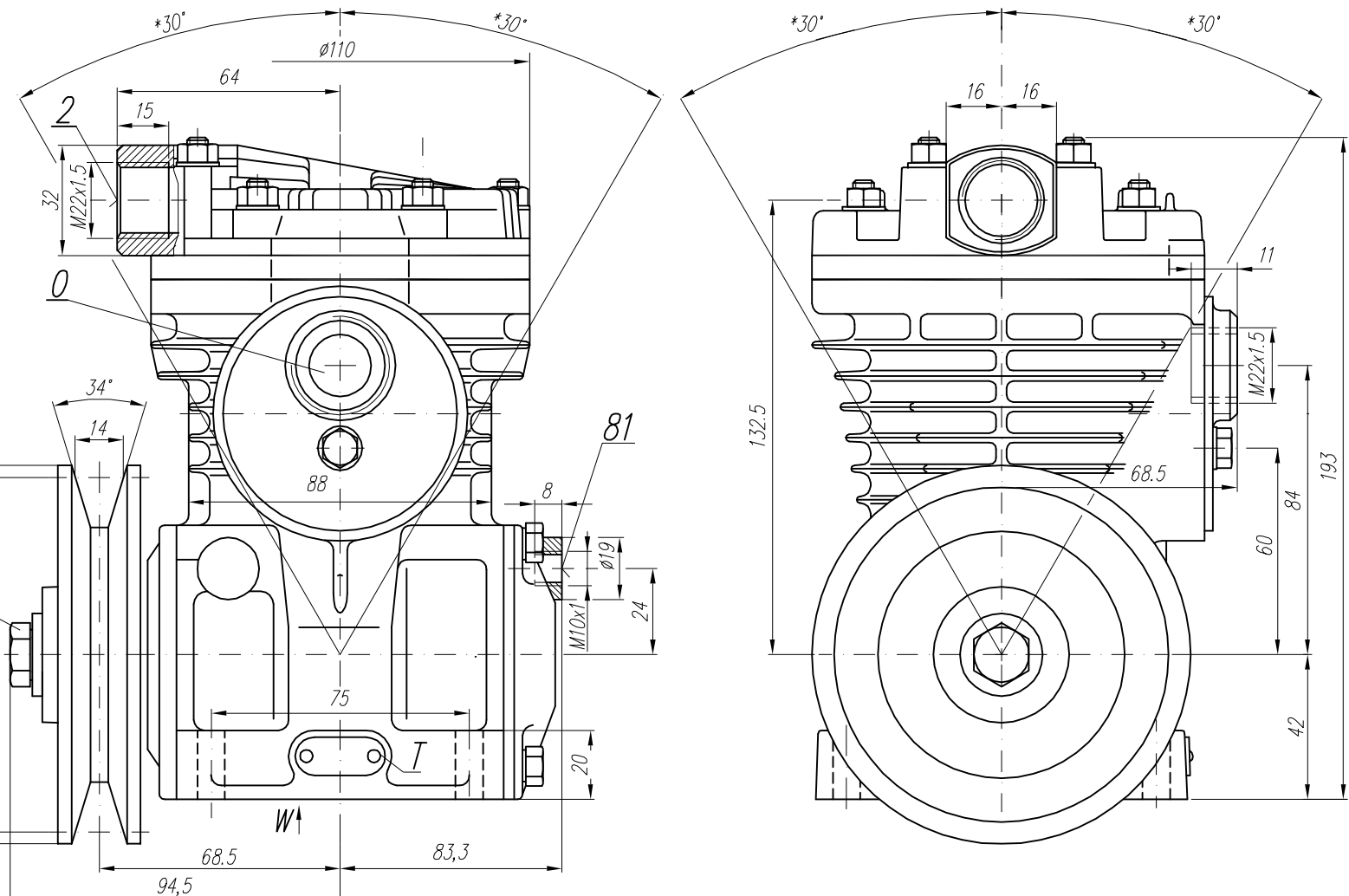


TECHNICAL DATA:

Number of cylinders 1
 Cylinder diameter 65 mm
 Piston stroke 23 mm
 Total piston displacement 76 cm³
 Mass 6.5 kg
 Working pressure to 1600 kPa
 Max. pressure for short time load 1800 kPa
 Max. allowable temp. of compressed air +220 °C
 Cooling by blow of air, with the speed of the flow min. 6 m/s

Lubrication forced circulation, splash lubrication
 min. pressure of oil 200 kPa



SYMBOL DESCRIPTION:

0 - suction end
 2 - discharge end
 81 - lubricating oil inlet
 82 - lubricating oil outlet and crankcase breathing
 Digital marking according to International Standard ISO-6786
 T - rating plate
 * - max. angular tilt of the compressor

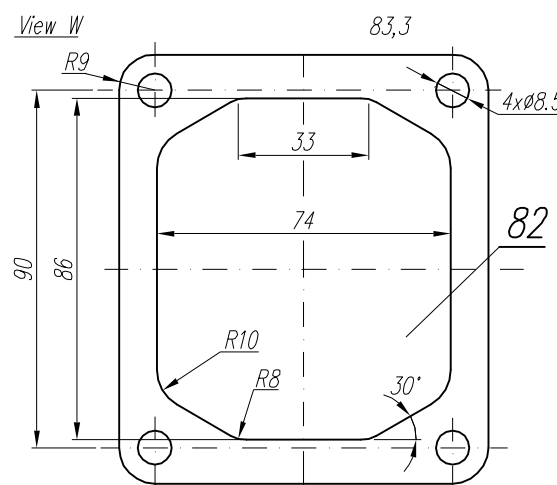
NOTE! The above characteristics are for open air suction system at ambient temperature +20°C and for cooling with fan

DEFINITIONS: CC=CT+CL - period of compressor average operating cycle

$UC = \frac{CT}{CC} \times 100\%$ - percentage fraction of loaded compressor operating time in average operating cycle

CL - compressor no-load operating time (free blow-out to atmosphere)
 CT - loaded compressor operating time

Code of compressor



OFFER DRAWING			
Konstr.	K. Malinowski	15.04.2002	FABRYKA OSPRZĘTU SAMOCHODOWEGO
Normaliz.	A. Walnicki		POLMO-Kódz S.A. Dział Konstrukcji
Sprawdził	W. Lesiak		
Zatwierdził			
Podziałka	Nazwa	1:1,25 Compressor 601.17.906	