

TECHNICAL DATA:

- Number of cylinders 1
- Cylinder diameter 65mm
- Piston stroke 23mm
- Total piston displacement 76cm
- Normal speed 3600 1/min
- Max. speed temporary 4500 1/min
- Max. allowable temp. of compressed air +220 C
- Working pressure Max. 1000kPa
- Mass 9,7 kg

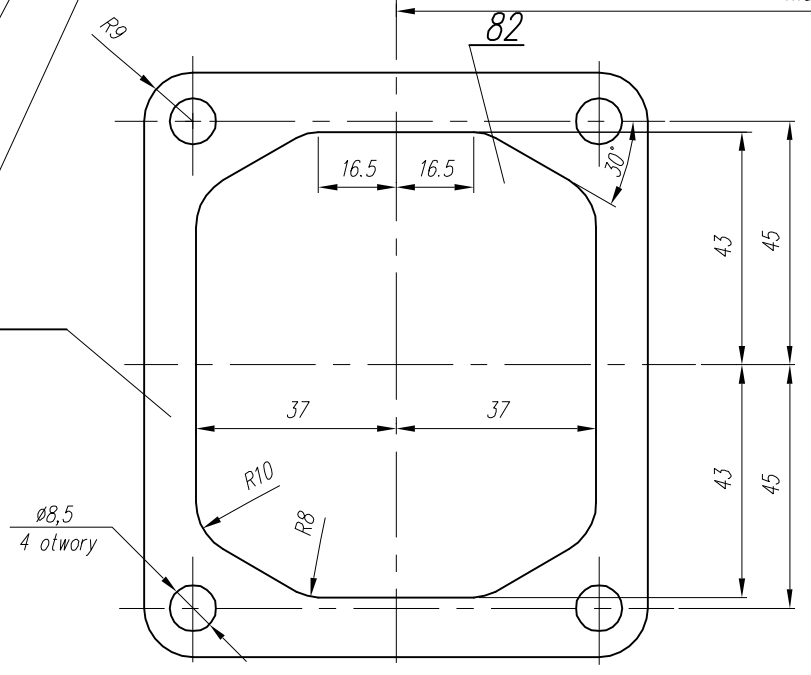
SYMBOLS DESCRIPTION:

- 0-suction connection
- 2-discharge connection
- 81-lubricating oil inlet
- min.pressure of oil 200 kPa
- 82-lubricating oil outlet and crankcase breathing
- *-max. angular deflection of the compressor
- T - rating plate

Compressor drive coupled

Compressor drive uncoupled

View "X"



URSUS Nr 40.235.972

OFFER DRAWING			
Konstr.	K.Malinowski	08.11.2005	FABRYKA OSPRZĘTU SAMOCHODOWEGO
Normaliz.	A.Walnicki		POLMO-Łódź S.A. FOS Służba Rozwoju
Sprawdził	A.Walnicki		
Zatwierdził	A.Walnicki		
Podziałka	Nazwa		
1:1		Compressor 601.10.972	