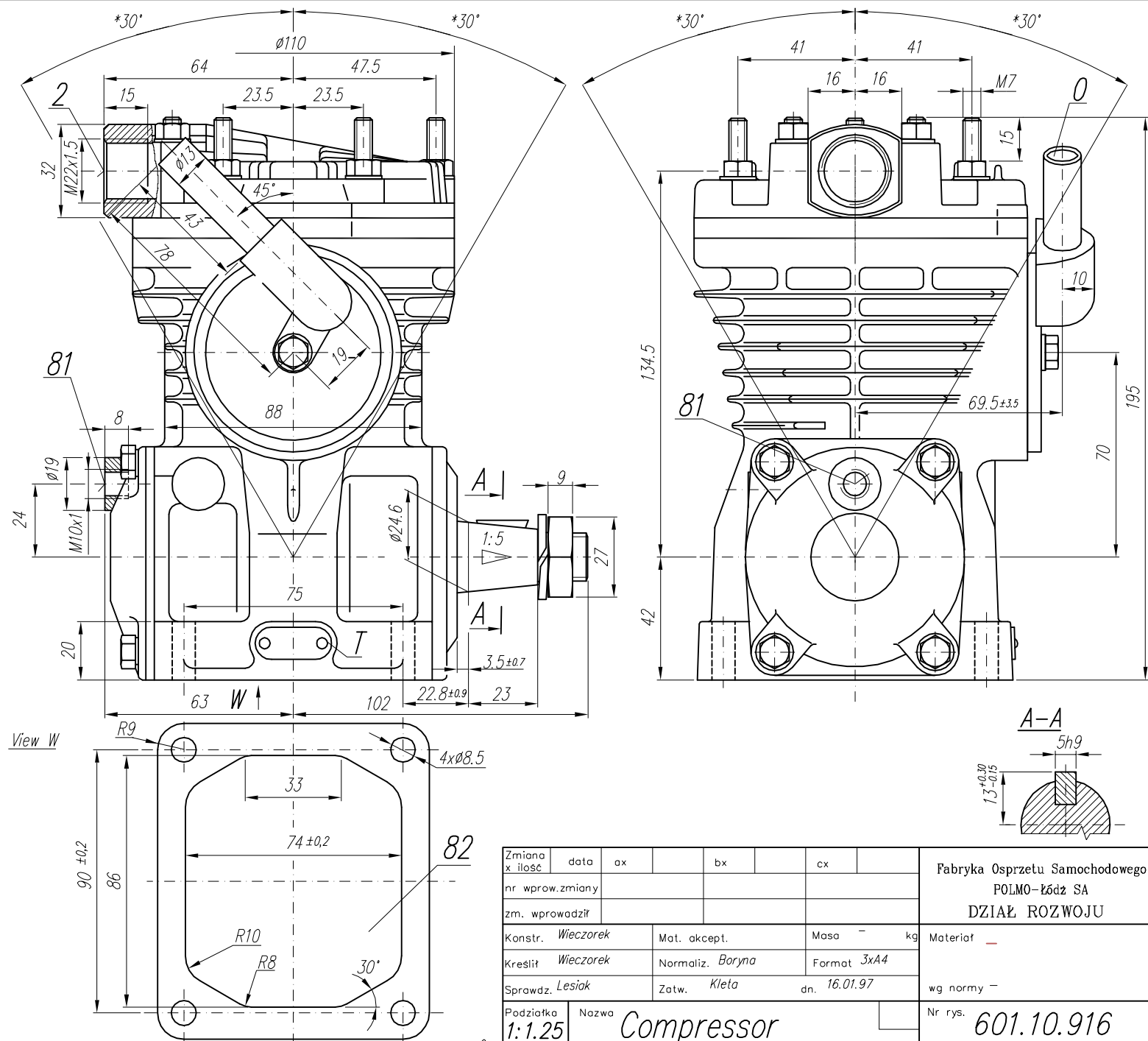
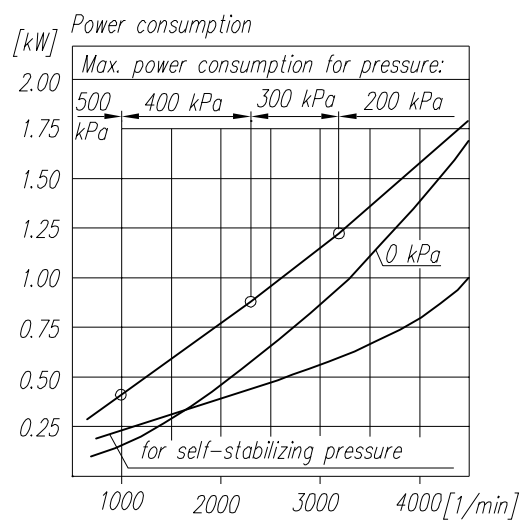


**TECHNICAL DATA:**

- Number of cylinders 1
- Cylinder diameter 65 mm
- Piston stroke 23 mm
- Total piston displacement 76 cm<sup>3</sup>
- Mass 6.5 kg
- Self-stabilizing pressure 1200<sup>+200</sup>/<sub>-100</sub> kPa
- Max. allowable temp. of compressed air +220 °C
- Cooling by inflation of air, with the speed of the stream min. 6 m/s
- Lubrication forced circulation, splash lubrication
- min. pressure of oil 200 kPa

**SYMBOLS DESCRIPTION:**

- 0 - suction connection
- 2 - discharge connection
- 81 - lubricating oil inlet
- 82 - lubricating oil outlet and crankcase breathing
- Numeral signs according to International Standard ISO-6786
- T - rating plate
- \* - max. angular deflection of the compressor



**NOTE!** The above characteristics are for open-inlet-valve control system at minimum cooling requirements and at ambient temperature +20°C

Zmiana x ilość	data	ax	bx	cx				Fabryka Osprzetu Samochodowego POLMO-Łódź SA DZIAŁ ROZWOJU
nr. wprowadz. zmiany								
zm. wprowadził								
Konstr. Wieczorek		Mat. akcept.		Masa - kg				Materiał -
Kreślił Wieczorek		Normaliz. Boryna		Format 3x44				
Sprawdz. Lesiak		Zatw. Klela		dn. 16.01.97				wg normy -
Podziałka 1:1.25		Nazwa Compressor						Nr rys. 601.10.916