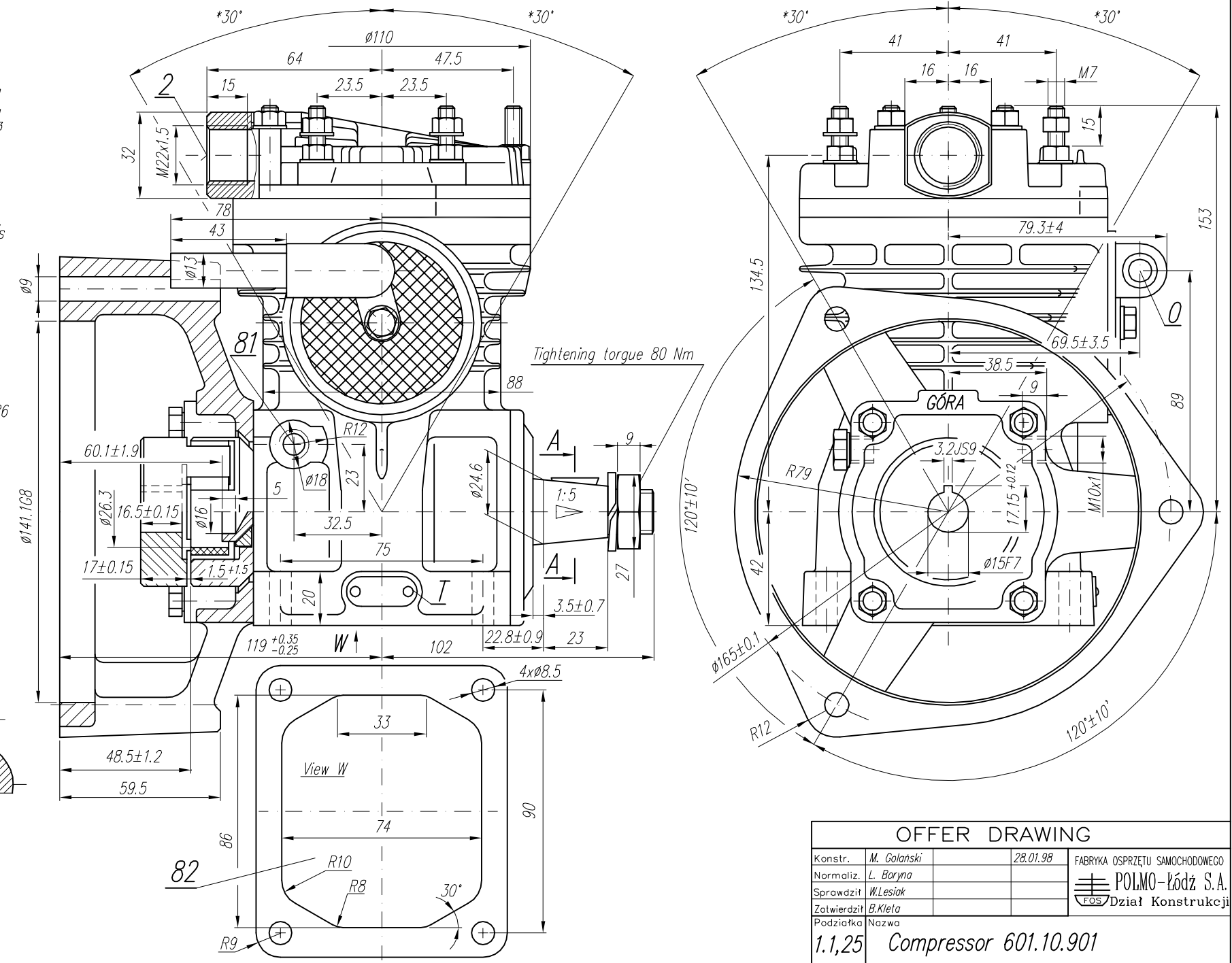
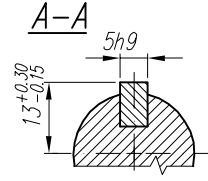
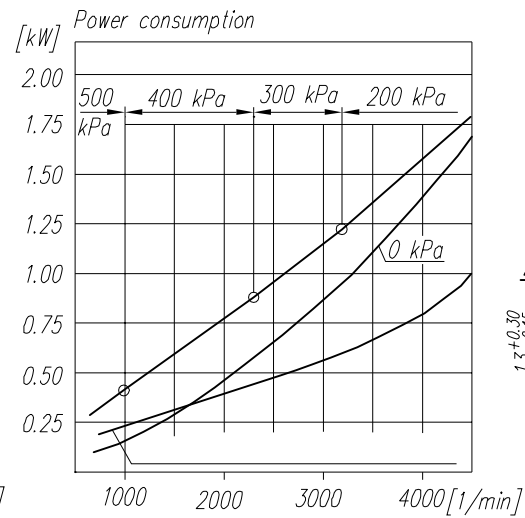
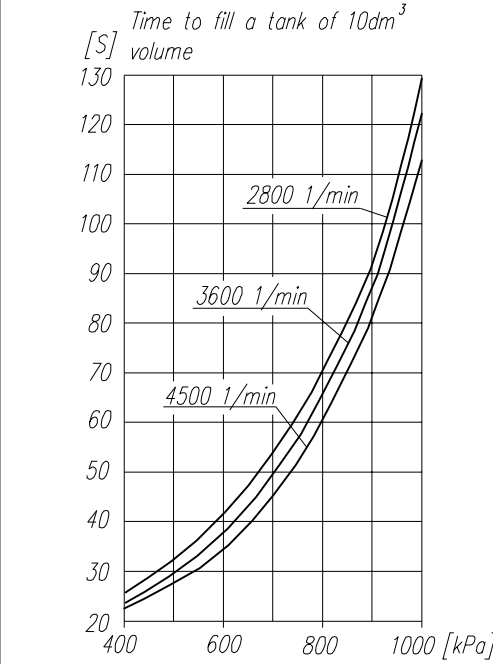


TECHNICAL DATA:

Number of cylinders 1
 Cylinder diameter 65 mm
 Piston stroke 23 mm
 Total piston displacement 76 cm³
 Mass 6.5 kg
 Self-stabilizing pressure 1200⁺²⁰⁰/₋₁₀₀ kPa
 Max. allowable temp. of compressed air +220 °C
 Cooling by blow of air, with the speed of the flow min. 6 m/s
 Lubrication forced circulation, splash lubrication
 min. pressure of oil 200 kPa

SYMBOL DESCRIPTION:

0 - suction end
 2 - discharge end
 81 - lubricating oil inlet (thread M10x1 length 9 mm)
 82 - lubricating oil outlet and crankcase breathing
 T - rating plate
 * - max. angular tilt of the compressor



NOTE! The above characteristics are for open air suction system at ambient temperature +20°C and for cooling with fan

OFFER DRAWING			
Konstr.	M. Golański	28.01.98	FABRYKA OSPRZĘTU SAMOCHODOWEGO
Normaliz.	L. Baryna		POLMO-KŁÓZ S.A.
Sprawdził	W. Lesiak		
Zatwierdził	B. Kleto		FOS/Dział Konstrukcji
Podziałka	Nazwa	1.1,25 Compressor 601.10.901	