

NOTE! The above characteristics are for open-inlet-valve control system at minimum cooling requirements and at ambient temperature +20°C

DEFINITIONS: CC=CT+CL - period of average operating cycle

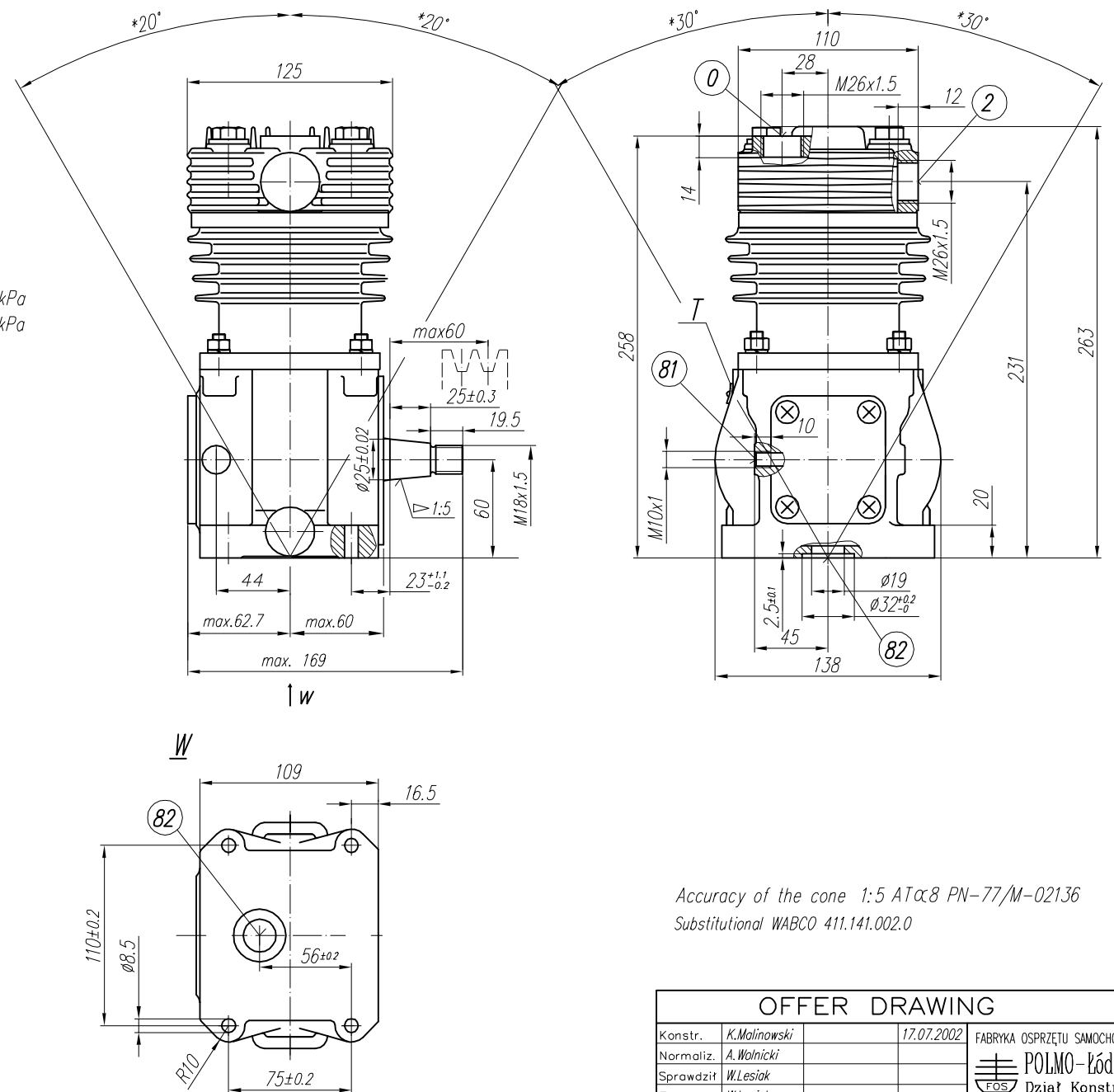
$UC = \frac{CT}{CC} \times 100\%$ - percent ratio of compressor full load operating time in average operating cycle (also called percent duty cycle)
 CL - compressor no-load operating time (exhaust to the atmosphere)
 CT - compressor full load operating time

TECHNICAL DATA:

Number of cylinders 1
 Cylinder diameter 75 mm
 Piston stroke 36 mm
 Total piston displacement 159 cm³
 Mass 10 kg
 Working pressure 1000 kPa
 Max. pressure or short time duty +220 kPa
 Max. allowable temp. of compressed air
 Cooling by inflation of air, with the speed of the stream min. 4 m/s für ≤ 800 kPa
 6 m/s für > 800 kPa
 Lubrication forced circulation, splash lubrication
 min. pressure of oil 200 kPa

SYMBOLS DESCRIPTION:

0 - suction connection
 2 - discharge connection
 81 - lubricating oil inlet
 82 - lubricating oil outlet and crankcase breathing
 Numeral signs according to International Standard ISO-6786
 T - rating plate
 * - max. angular deflection of the compressor



Accuracy of the cone 1:5 ATα8 PN-77/M-02136
 Substitutional WABCO 411.141.002.0

OFFER DRAWING			
Konstr.	K.Malinowski	17.07.2002	FABRYKA OSPRZĘTU SAMOCHODOWEGO
Normaliz.	A.Walnicki		POLMO-Łódź S.A.
Sprawdził	W.Lesiak		
Zatwierdził	W.Lesiak		
Podziałka	Nazwa	1:2,5 Compressor 601.09.947	