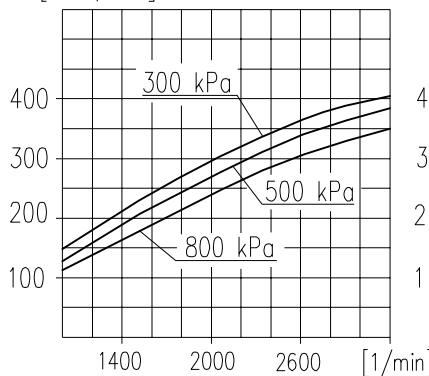
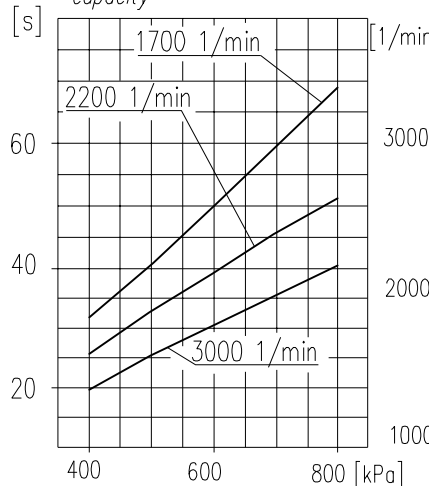


Suction capacity

[dm<sup>3</sup>/min]

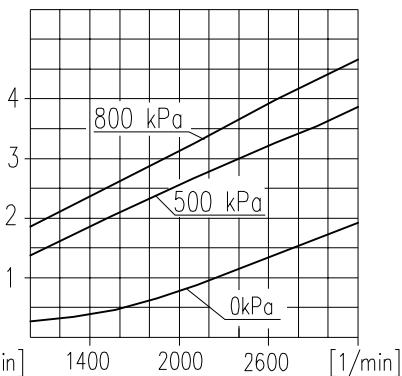


Time to fill a tank of 40dm<sup>3</sup> capacity

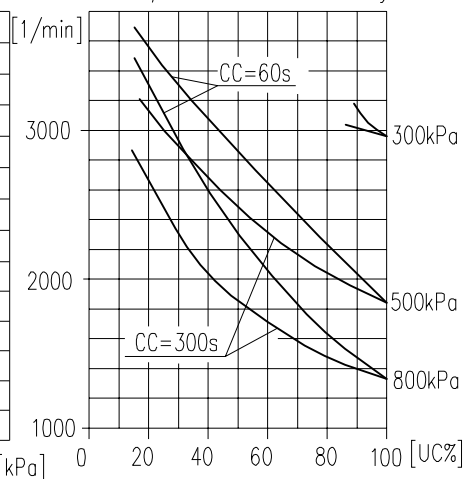


Power consumption

[kW]



Max. r.p.m. for continuous duty



**NOTE!** The above characteristics are for open-inlet-valve control system at minimum cooling requirements and at ambient temperature +20°C

**DEFINITIONS:** CC=CT+CL - period of average operating cycle

$UC = \frac{CT}{CC} \times 100\%$  - percent ratio of compressor full load operating time in average operating cycle (also called percent duty cycle)

CL - compressor no-load operating time (exhaust to the atmosphere)

CT - compressor full load operating time

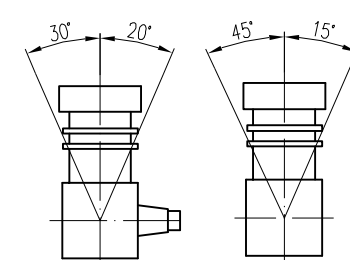
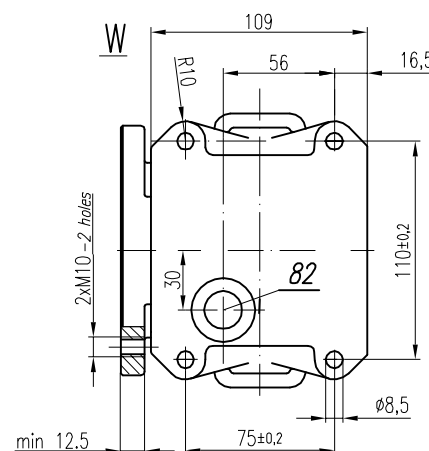
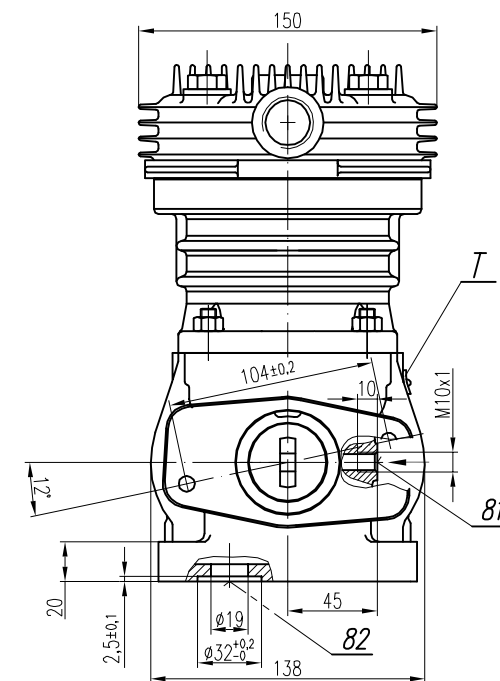
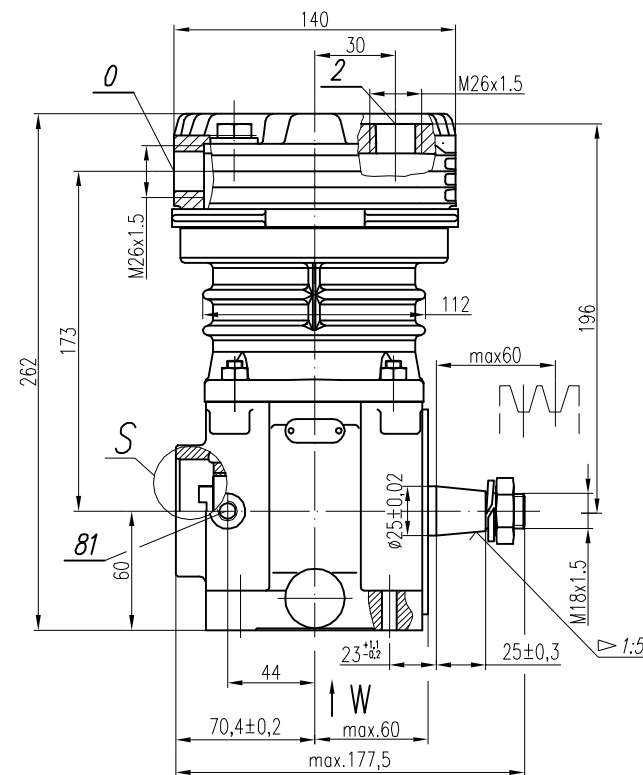
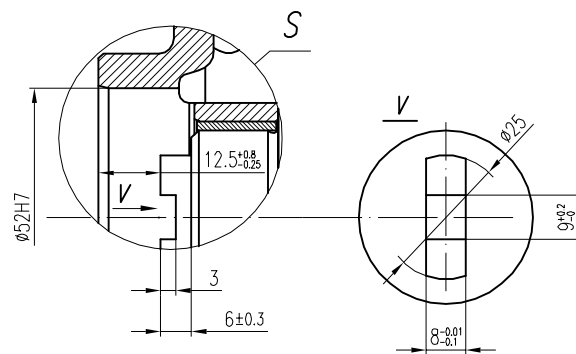
**TECHNICAL DATA:**

Number of cylinders 1  
 Cylinder diameter 90 mm  
 Piston stroke 36 mm  
 Total piston displacement 229 cm<sup>3</sup>  
 Mass 11.5 kg  
 Working pressure 800 kPa  
 Max. pressure for short time duty 1000 kPa  
 Max. allowable temp. of compressed air +220 °C  
 Cooling by inflation of air, with the speed of the stream min. 4 m/s  
 Lubrication forced circulation, splash lubrication min. pressure of oil 300±200 kPa  
 (The pressure drop down is allowed to min. 60 kPa during the idle running of the heated up engine)

**SYMBOLS DESCRIPTION:**

0 - suction connection (thread M26x1,5 length 14mm)  
 2 - discharge connection (thread M26x1,5 length 14mm)  
 81 - lubricating oil inlet (thread M10x1 length 10mm)  
 82 - lubricating oil outlet and crankcase breathing (thread M22x1,5 length 5,5mm)

Numeral signs according to International Standard ISO-6786  
 T - rating plate



CLASS	GENERAL TOLERANCES				FORCE, POWER PRESSURE ETC.
	RANGE OF NOMINAL DIMENSIONS (±)MM				
II	≤50	>50 ≤180	>180 ≤400	>400	±3'
	1.0	2.0	3.0	4.0	±10 %

OFFER DRAWING					
Konstr.	K.Malinowski	17.01.2011	FABRYKA OSPRZĘTU SAMOCHODOWEGO		
Normaliz.	A.Walnicki		POLMO-KÓDZ S.A.		
Sprawdzit	A.Walnicki		FOS Stuzba Rozwoju		
Zatwierdzit	A.Walnicki				
Podzialka	Nazwa	1:2.5 Compressor 601.07.916			